

A circular wreath of various botanical illustrations, including ferns, red and green leaves, orange flowers, and purple flowers, surrounding a central white circle.

Chloe Scoggins & Karli Jo Childers

THE FLEMING-NEON
WELLNESS HUB
OUTDOOR
RENOVATION
PROJECT



Department of
Landscape Architecture

Martin-Gatton College of Agriculture, Food and Environment



Background Information & Existing Conditions



Where We Are Now:

- Critical Community Need
- No Community Clinic, Medical Provider or Pharmacy
- Multiple Health Disparities in our Community much higher than U.S. rates.



Action Plan:

- Establish a community owned Wellness Hub providing a holistic approach to wellness encompassing mind, body and spirit while addressing the 7 dimensions of Well-Being.



Outcomes:

- Advance health equity in our community through increased access to resources/care thus improving quality of life for citizens of Fleming-Neon and surrounding communities.

DR. LARISSA HOGG BAILEY DNP, APRN

larissabailey78@yahoo.com
(606) 312-5242

Our Goal:

- Create cultural connection & economic value component
- Provide physical and mental health help opportunities
- Create a space that hosts and overall happier lifestyle.

This can be achieved through creating spaces for social conversations and resources available for various wellness activities outdoors.

Site Photos

2024



Parking Lot
Conditions



View Looking to
the Creek Bank



View From the
Existing Bridge



Building & Parking
Lot Conditions

Site Photos

2024



Open Grass
Lawn



Group Seating



Outdoor Yoga
Opportunity



Peaceful Rock &
Pond Garden



Karli Jo Childers

Woven in Wellness



Goals

- Address environmental and infrastructure issues highlighted by the flood
- Bring back essential resources such as a pharmacy, doctor's office, and emergency care facilities to Fleming Neon
- Improve access to healthcare services for residents of Fleming Neon
- Enhance the overall well-being and quality of life for the community



The mission of Woven in Wellness project is to provide an inclusive space for mental, physical, social, and emotional wellness for the local community while incorporating environmentally-friendly practices. The project aims to enhance overall health and quality of life through holistic well-being programs and accessible pricing options.

Mission Statement



-Graceful Plates

Entrance

-Graceful Plates

Courtyard

-Therapy Center

Entrance

-Medical Office

Entrance

-Low Impact

Development Parking

-Private Peace

-Updated Streetscape

-The Woven Walk

-Woven Wellness

Connection Court



Birds Eye View



Welcome to
your wellness
journey.



Learn about homeopathic healing along a sensory path.





 lumion

Meditate and find your inner peace.

The Wellness Hub



Graceful Plates Community Kitchen

"Nourishing Body, Mind, and Spirit"



Woven Wellness Connection Court



Phasing



Phase One



Phase Two



Phase Three





The Wellness Hub Hive

Chloe Scoggins

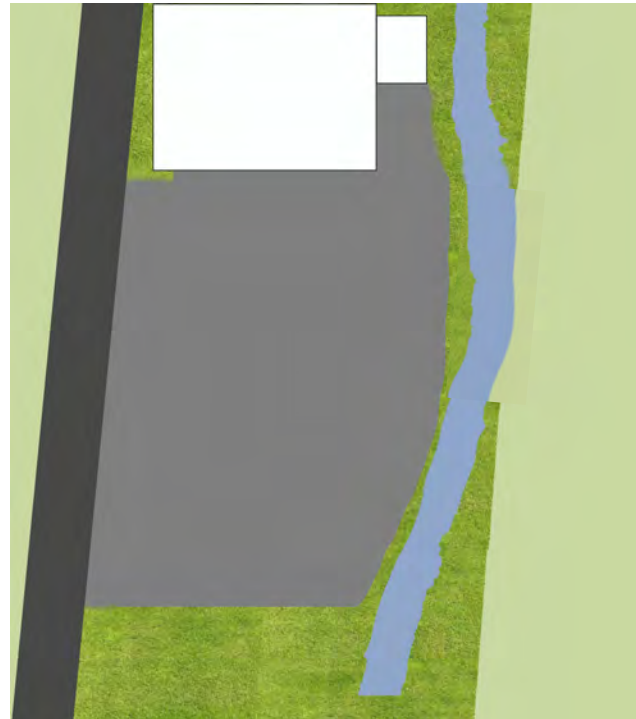
Site Specific Goal:



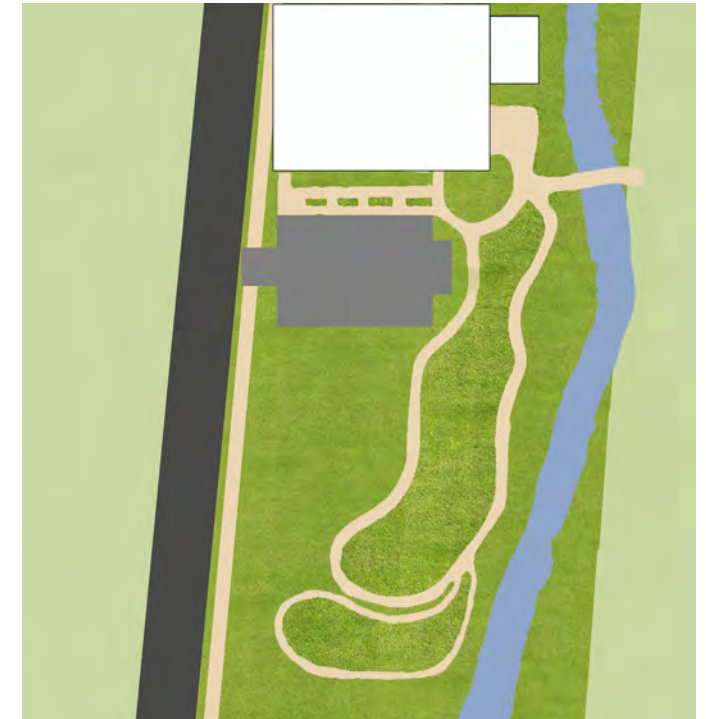
Mission:

- Respond to users participating in different wellness activities in a series of gardens
- Provide group therapy sessions & areas of solitude
- Decrease the amount of parking pavement by 50% & replace it with natural green space
- Enhance the overall appeal & quality of life for people

Current Site Conditions:



Proposed Site Conditions:



Master Plan



"This design seeks to provide users with wellness activities located in diverse gardens, embracing group and secluded therapy spaces. By trading parking pavement for lush greenery, we aim to weave nature into people's everyday life."



Master Plan



"This design seeks to provide users with wellness activities located in diverse gardens, embracing group and secluded therapy spaces. By trading parking pavement for lush greenery, we aim to weave nature into people's everyday life."



Enlargement Area



Enlargement Area





Section



Open Lawn

Vegetation Buffer

Path

Group Seating



Section



Parking Lot

Path

Wetland Area

Path

Wetland Area



Perspective

Parking lot facing the building



Before:



After:



Perspective

Parking lot facing away from the building



Before:



After:



Perspective

Parking Lot & Neighboring Green Space



Perspective

Outdoor Patio Space



Before:



After:



Perspective

Open Lawn Space & Garden





Perspective

Flower & Vegetable Gardens

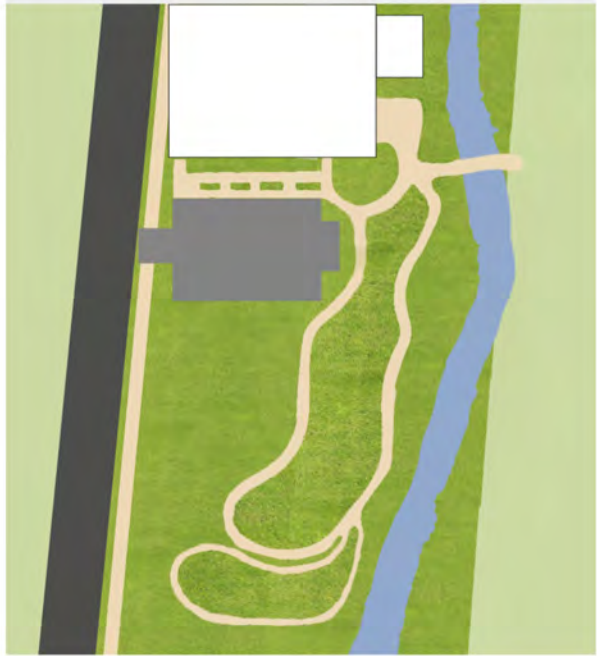
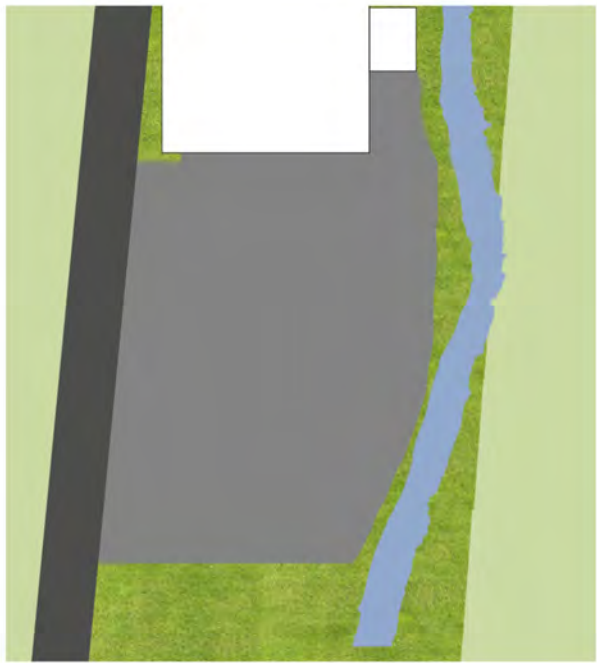




Perspective

Outdoor Classroom & Sensory Garden





80% decrease in pavement

Signage & Facebook Post

Entry Sign to the Garden & Marketing



I really love this layout!!
Please share more at <http://marinad.com.ar>
[See translation](#)



👍❤️👤 3,675 2,475 comments 1,928 sharings
10,210 views

👍 Like 💬 Comment ➦ Share



Thank You

With our designs we dream to create a therapeutic space that provides the community with resources in a holistic way that also replaces the existing pavement conditions with green space. The outdoor portion of the Wellness Hub aims to provide the community with therapeutic outdoor spaces making Fleming-Neon a greener place to rest.

