

Goose Creek ATV & RV Park

Evan Baldrige & Emmanuella Braide



Department of
Landscape Architecture

Martin-Gatton College of Agriculture, Food and Environment



Goose Creek

This satellite map shows a rugged, mountainous landscape with a complex network of ridges and valleys. The terrain is covered in a mix of green vegetation and brownish, possibly cleared or rocky, areas. A red outline in the upper left corner highlights a specific area labeled 'Goose Creek'. Four other locations are marked with red triangles and labeled: 'Jackhorn' in the center, 'McRoberts' to the right, 'Fleming-Neon' in the lower center, and 'Jenkins' in the bottom right corner. A winding road or river is visible on the right side of the map. A small circular icon is located in the bottom right corner.

Jackhorn

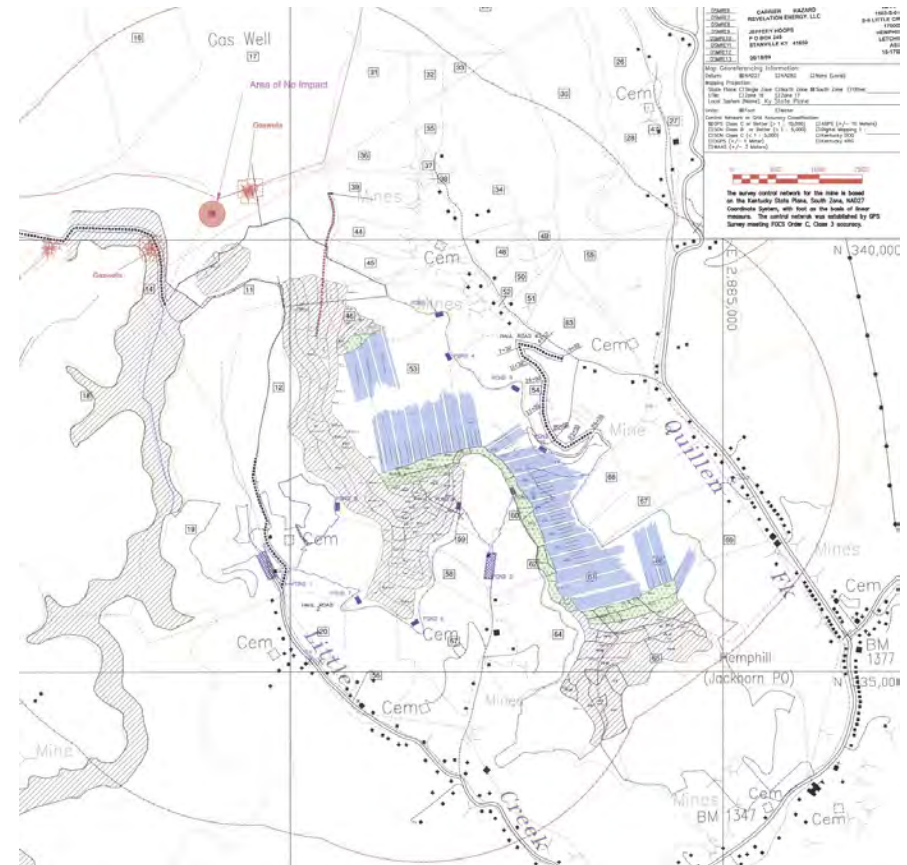
McRoberts

Fleming-Neon

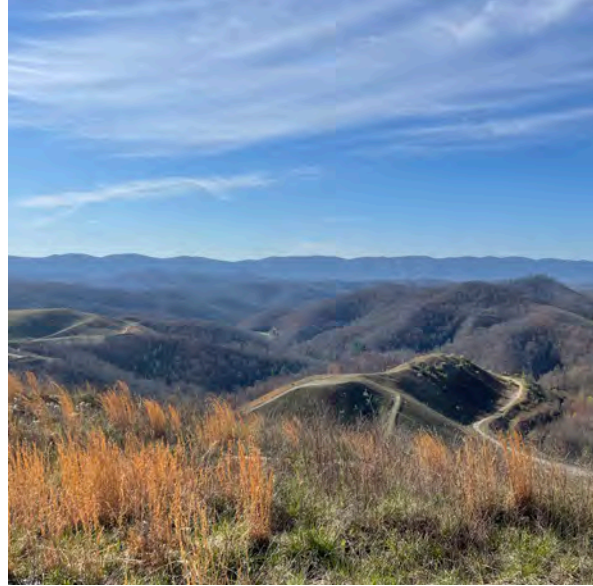
Jenkins

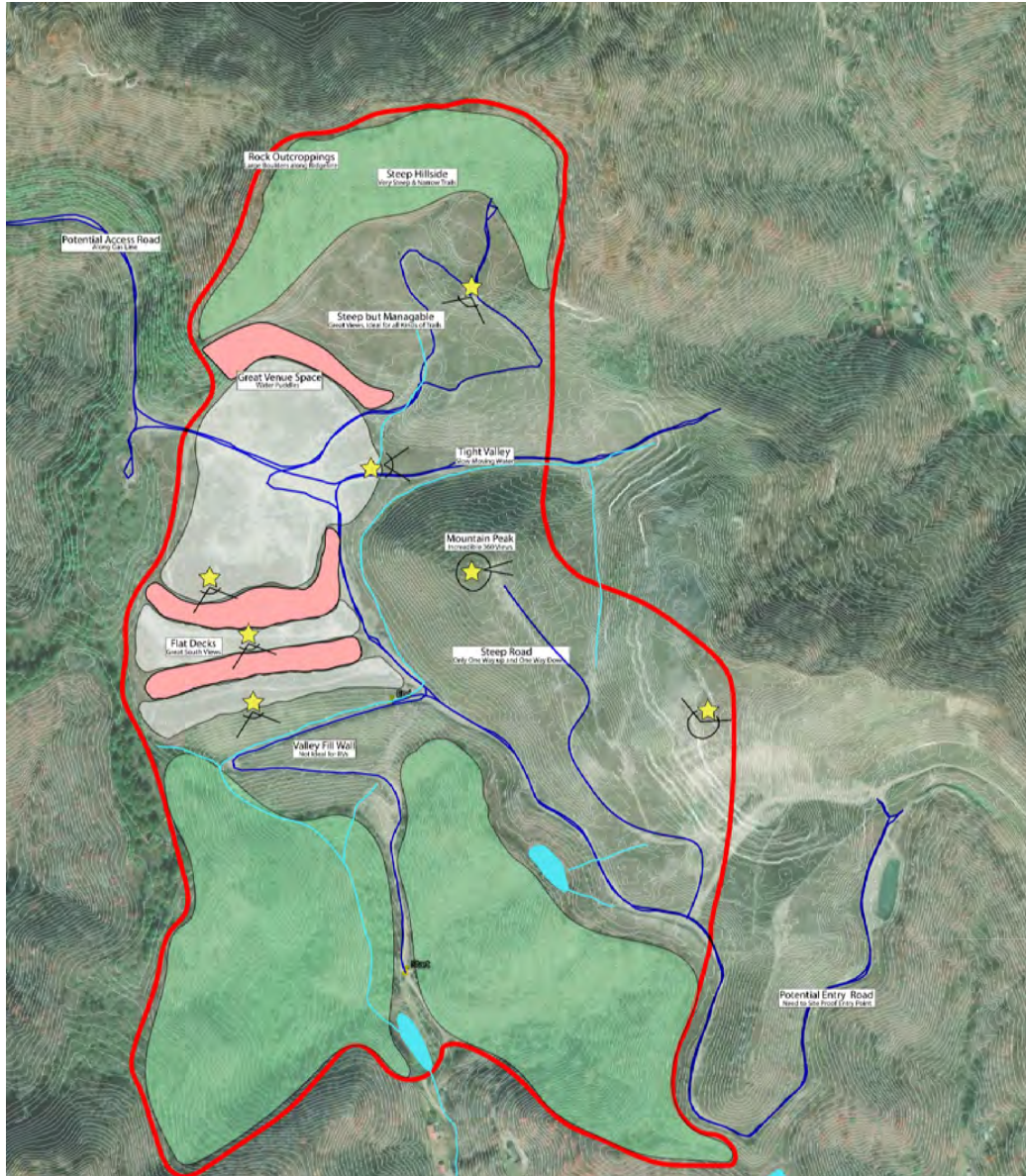


Mine History



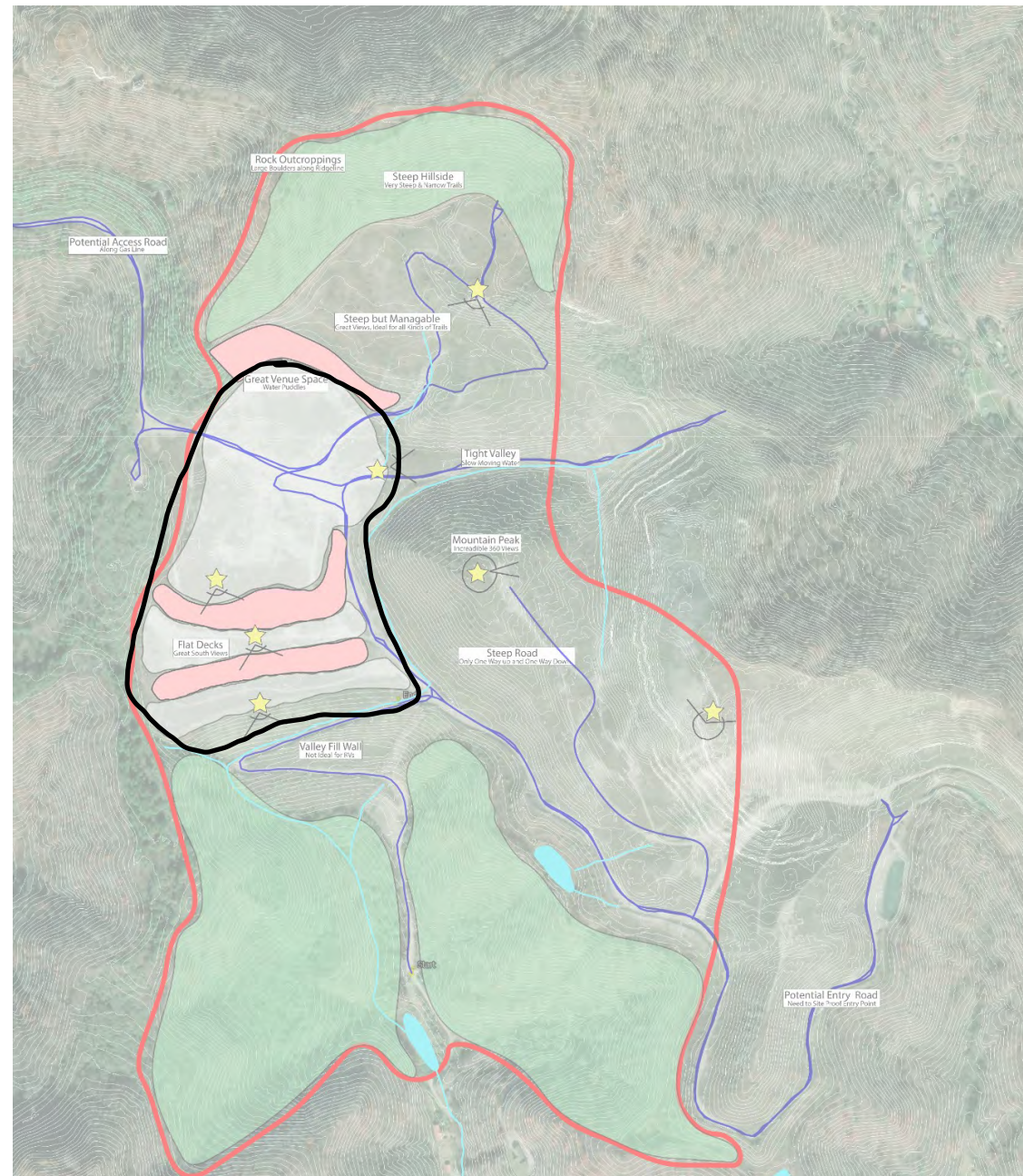
"A Landscape that Inspires Adventure"





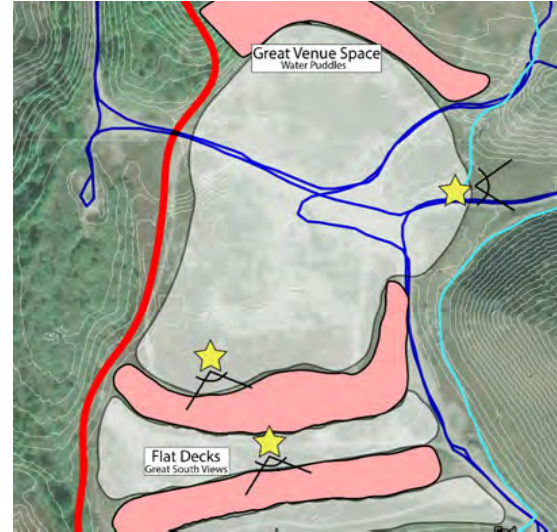
The Site

- 200 acres
- 135 of which is devoid of sizable vegetation
- 65 acres of mature mixed hardwood
- Mixture of incredibly steep terrain and some very flat terrain
- Connected to the trail network coming from the west
- Incredible south views



Valley Fill

- Great long southern views
- Northern views to a woody ridge
- Devoid of vegetation
- Dead flat



Key Map



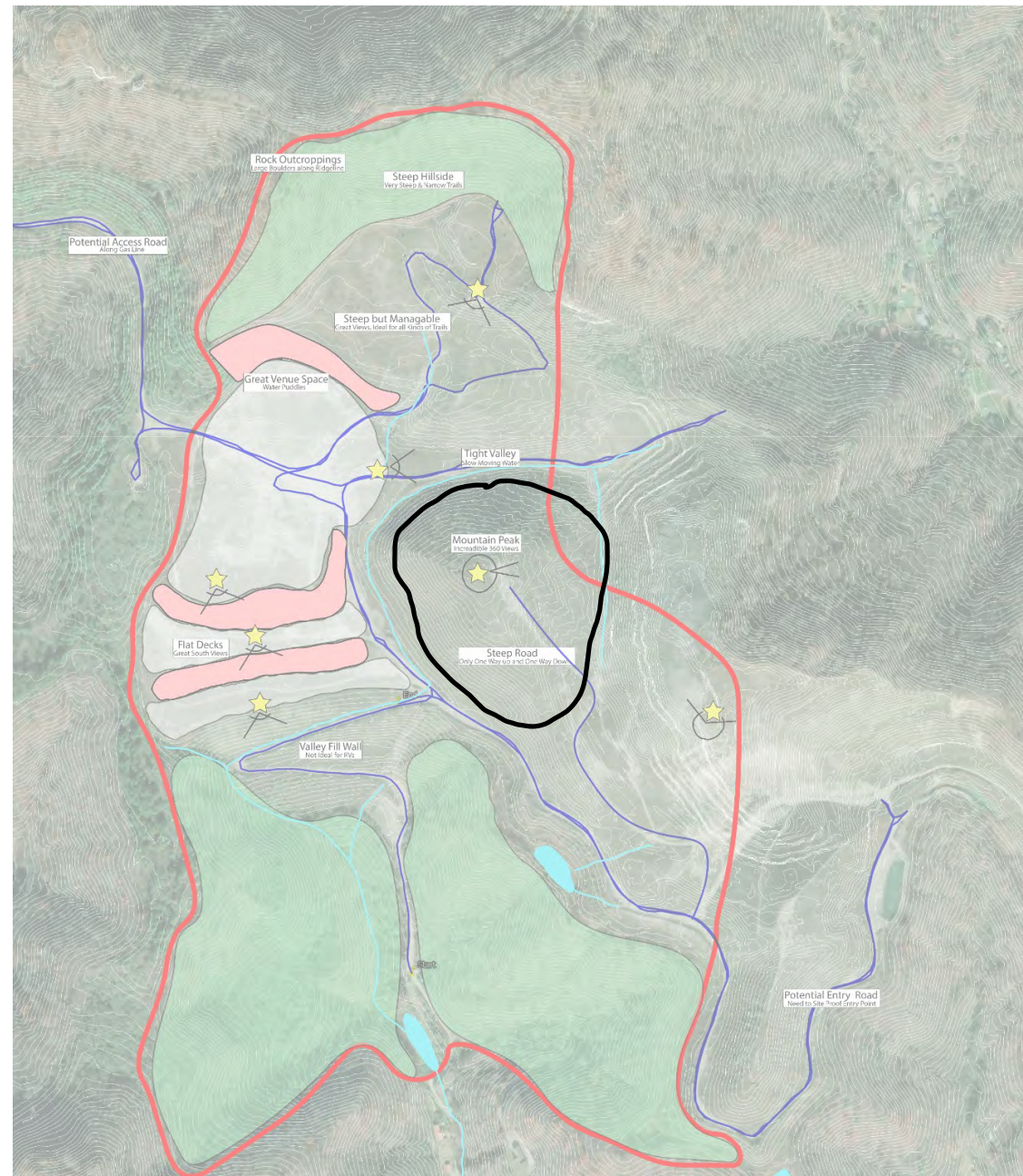
Looking down into valley fill



From valley fill looking north

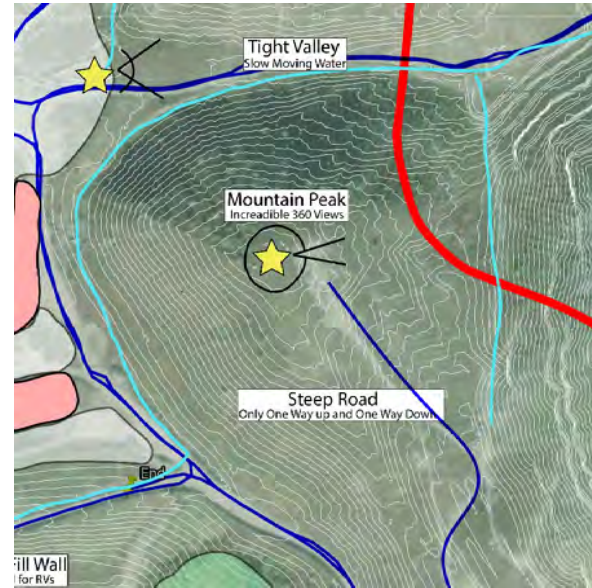


Looking south from valley fill



Central Hill

- 200-feet high
- Very steep in spots
- Only one road to the top
- Incredible views in every direction
- Large flat area at the top
- Important location to get people to



Key Map



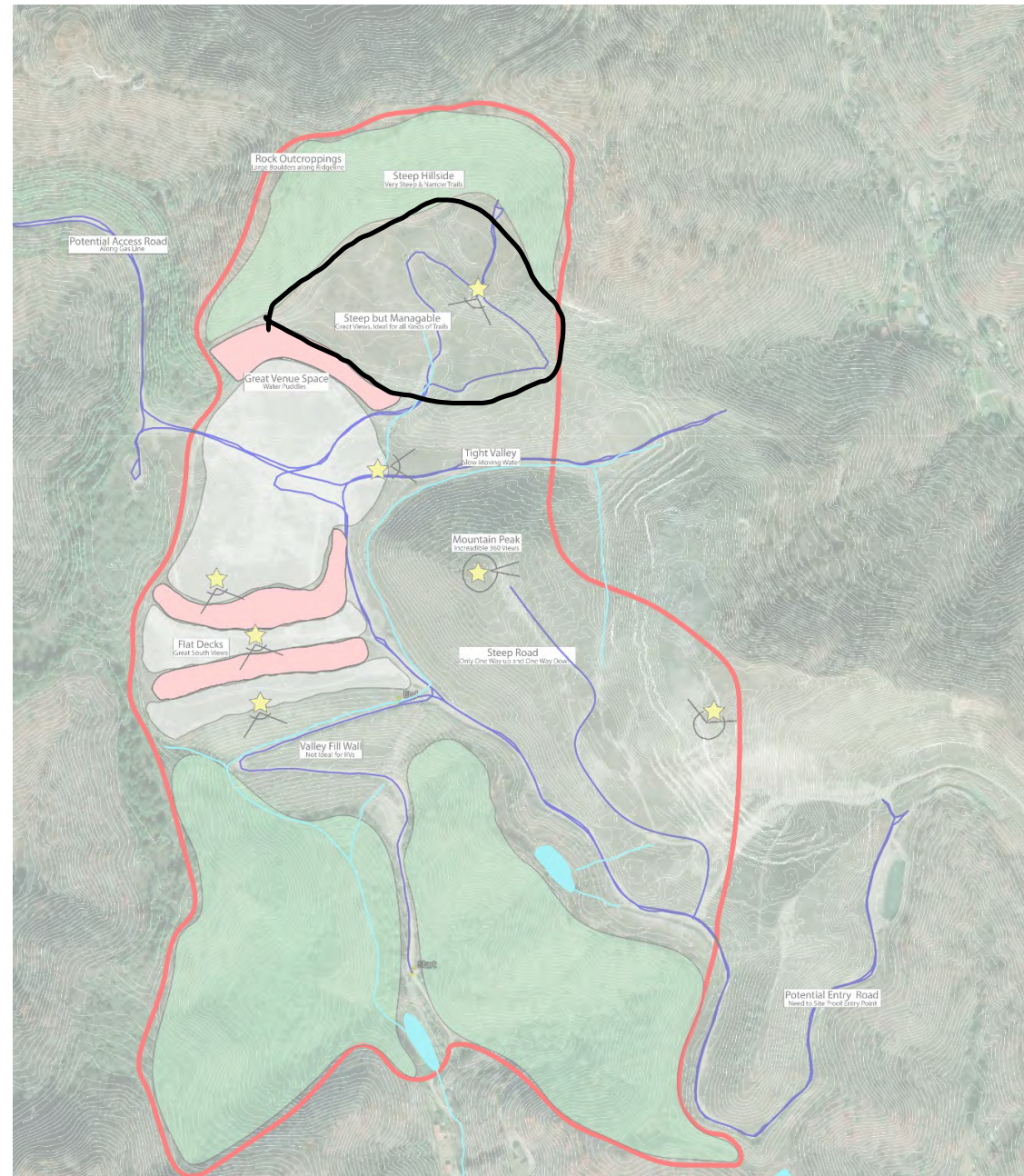
Road up to central hill



Central hill from the north

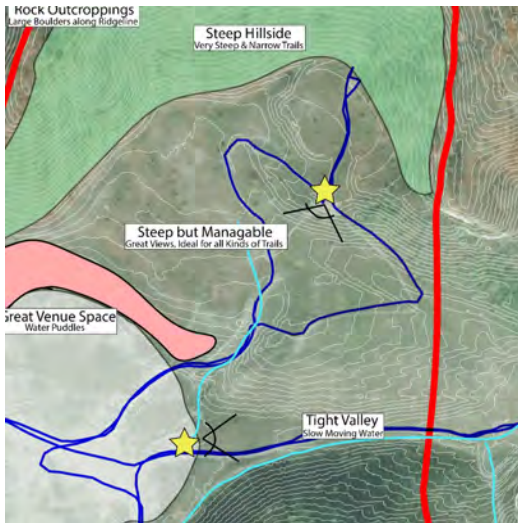


Looking down on valley fill from hill





Entire plateau from top of central hill



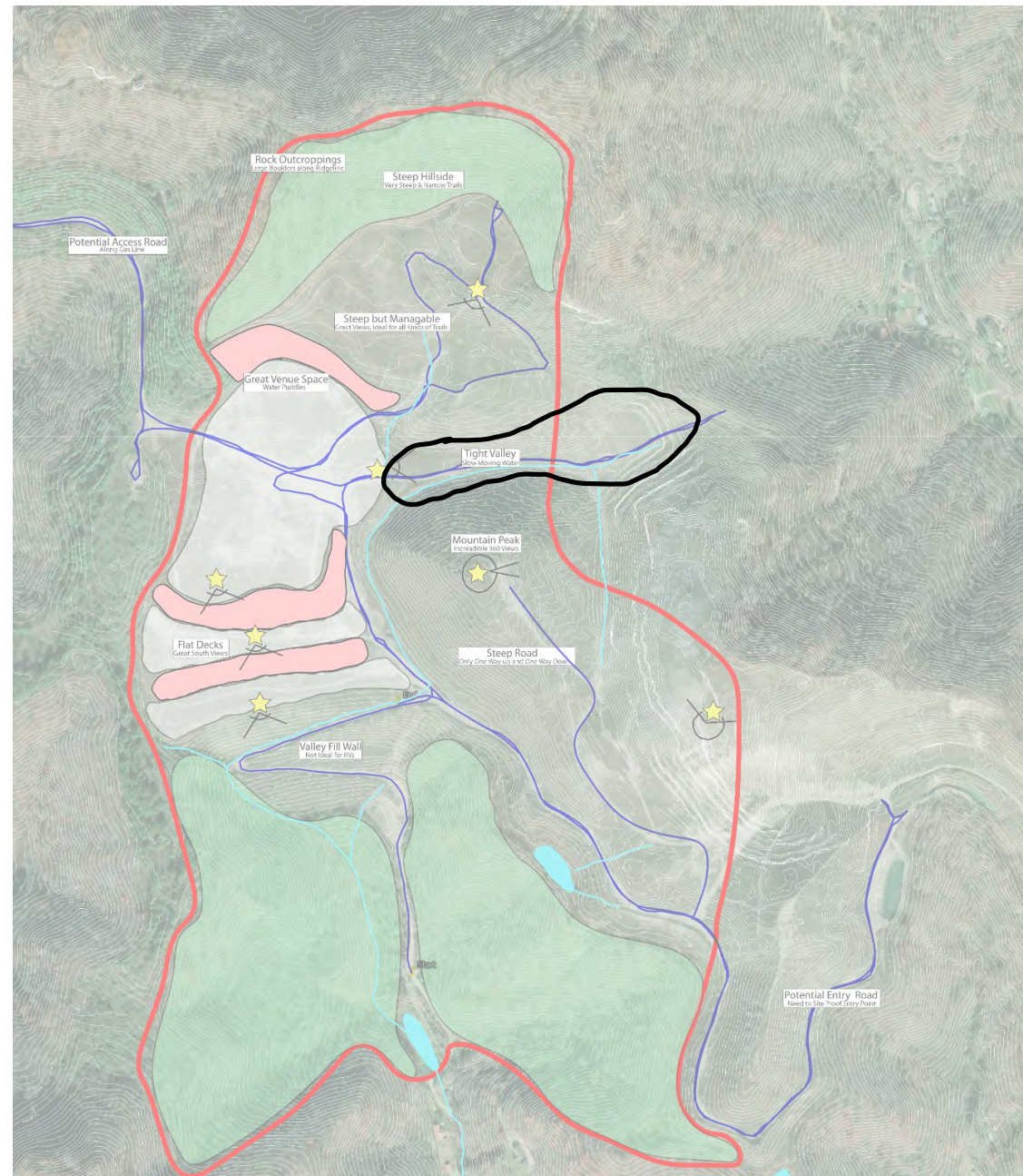
Key map



Looking up towards plateau

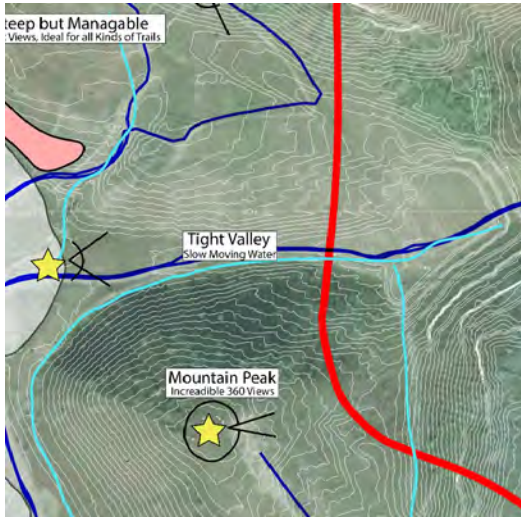
Northern Plateau

- Mostly flat, with some abrupt rises
- Great views back into the valley fill
- Area with the most natural revegetation
- Prime location for reforestation





Tight valley from valley fill



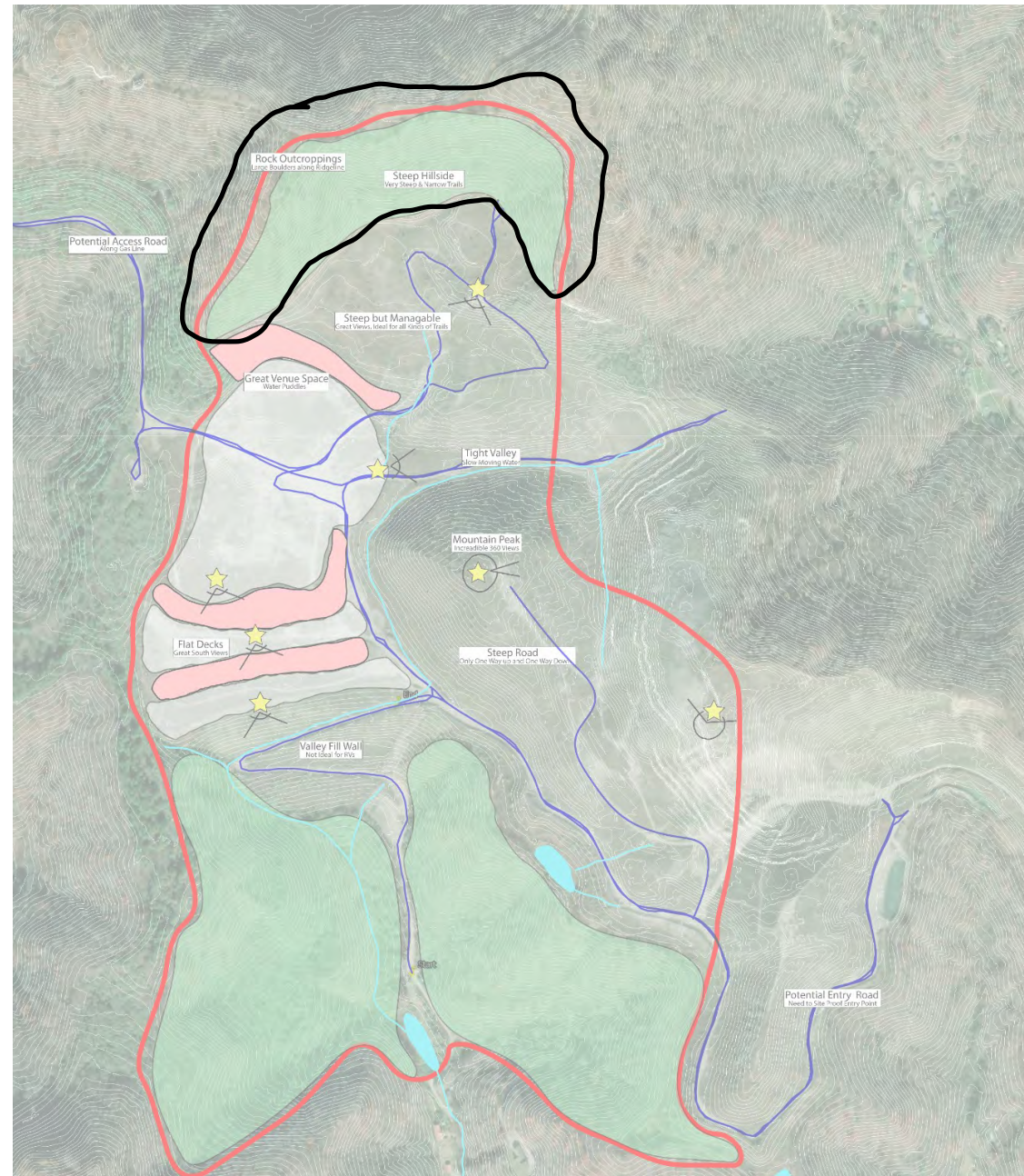
Key map

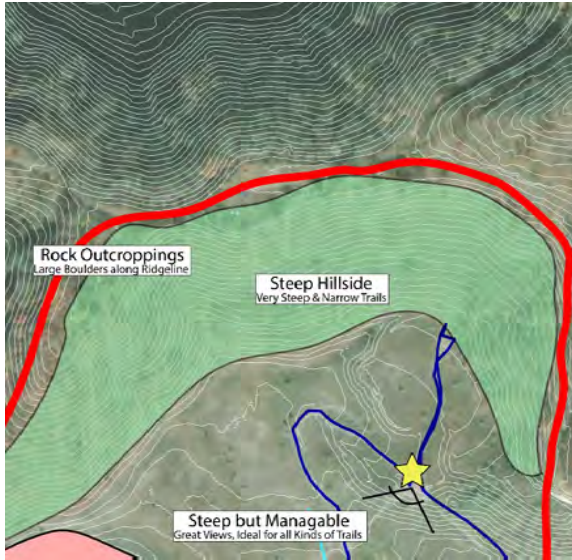


Back of valley from above

Tight Valley

- Meeting point of two steep hills
- Beautiful view from valley fill
- Collects massive amounts of water
- Water moves very slowly through valley
- Great potential for water detention and retention





Key Map



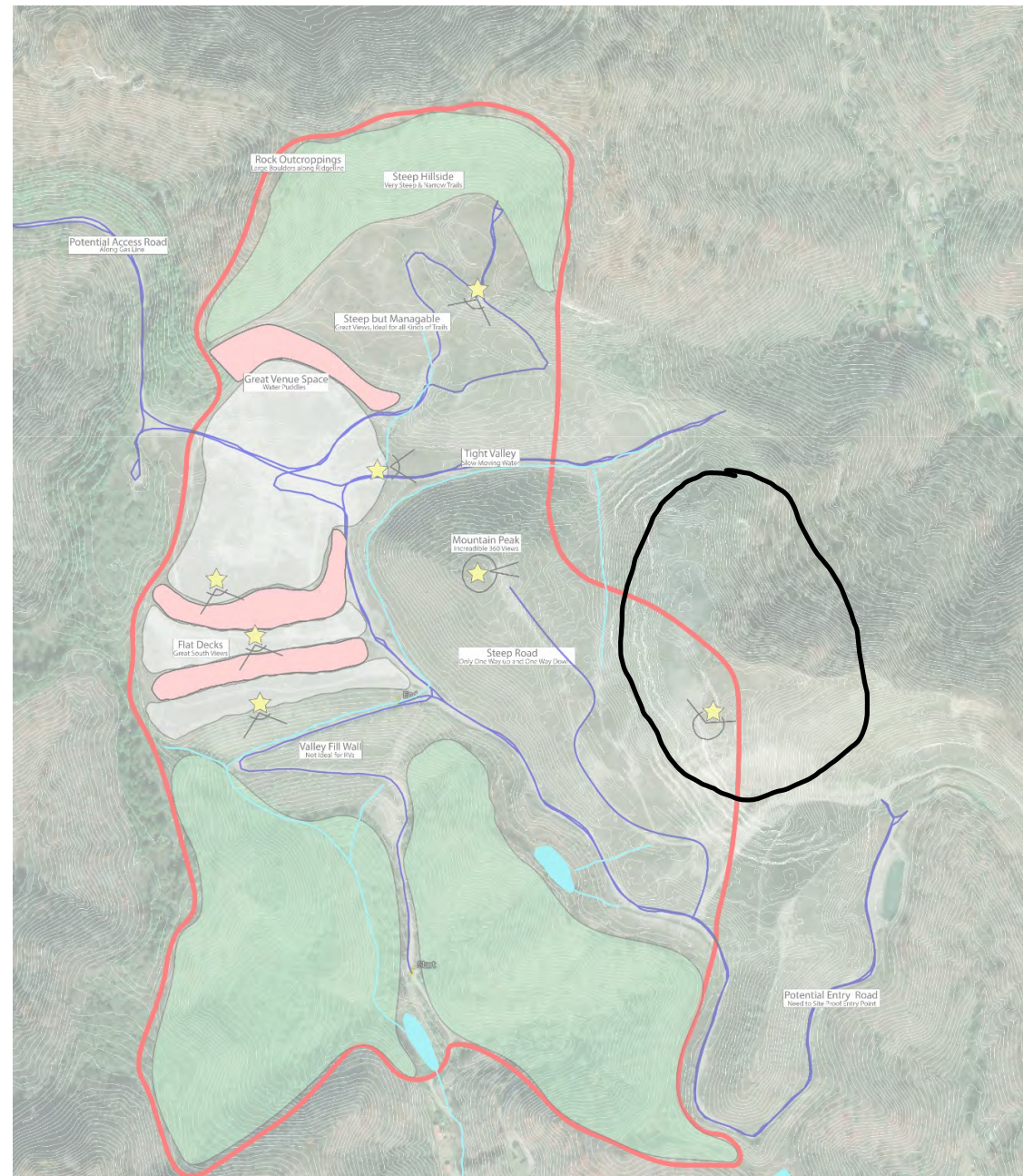
Full back ridge from hill

- Fully covered in trees
- Extremely steep
- Top of ridge is dotted with rock outcroppings
- Too steep for ATVs



Ridge from up close, rock outcroppings at the top

Northern Boundary Ridge





Dramatic southern views, can see Pine Mountain



Key map



Taken from
central hill



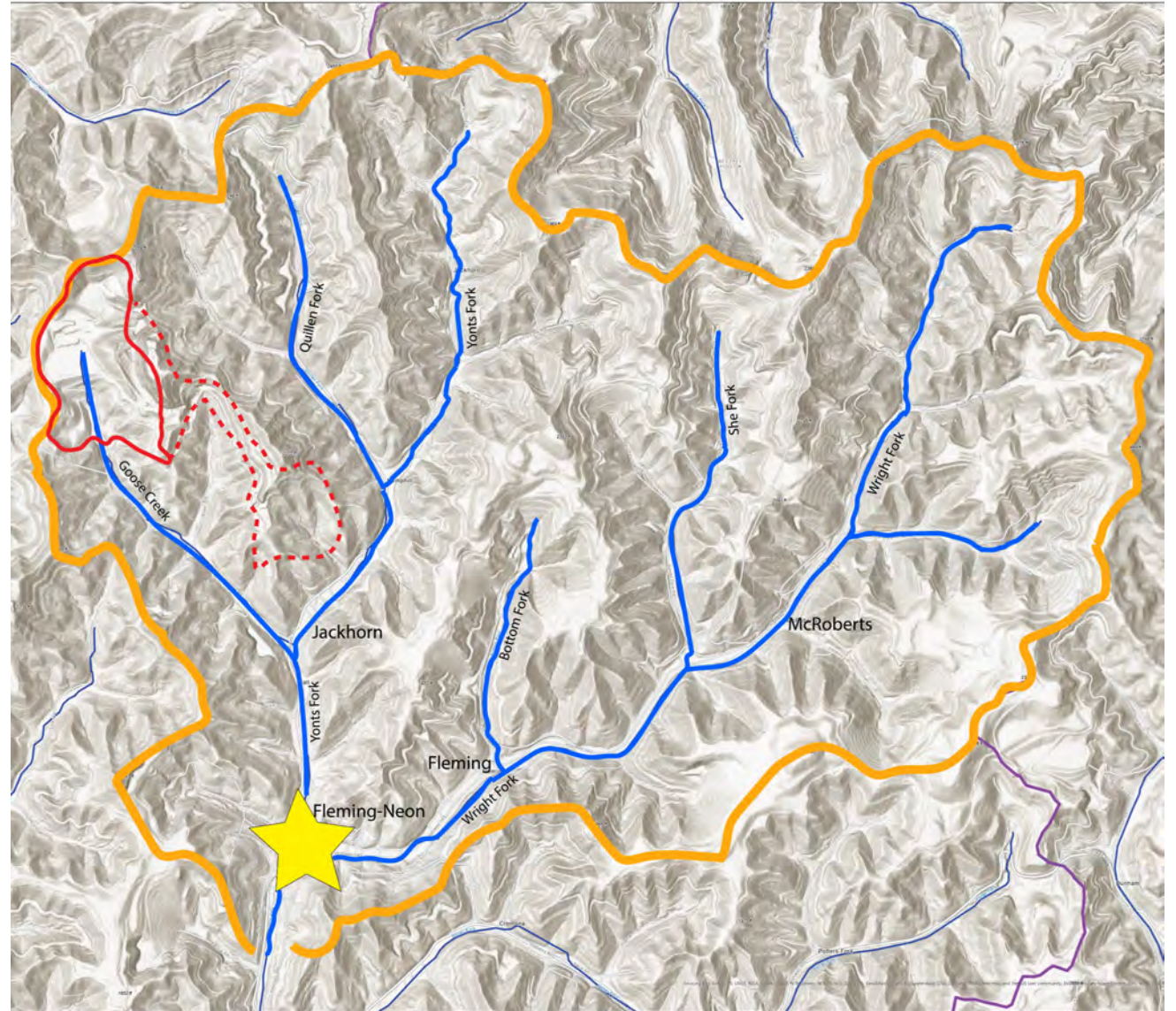
Looking west

Large Eastern Hill

- 300-feet above valley fill
- Difficult to access
- Dramatic southern views

Fleming Neon Watershed

Goose Creek is 2.5% of the Fleming-Neon watershed and the entire mined site is 5% of the watershed.



Retention and Detention



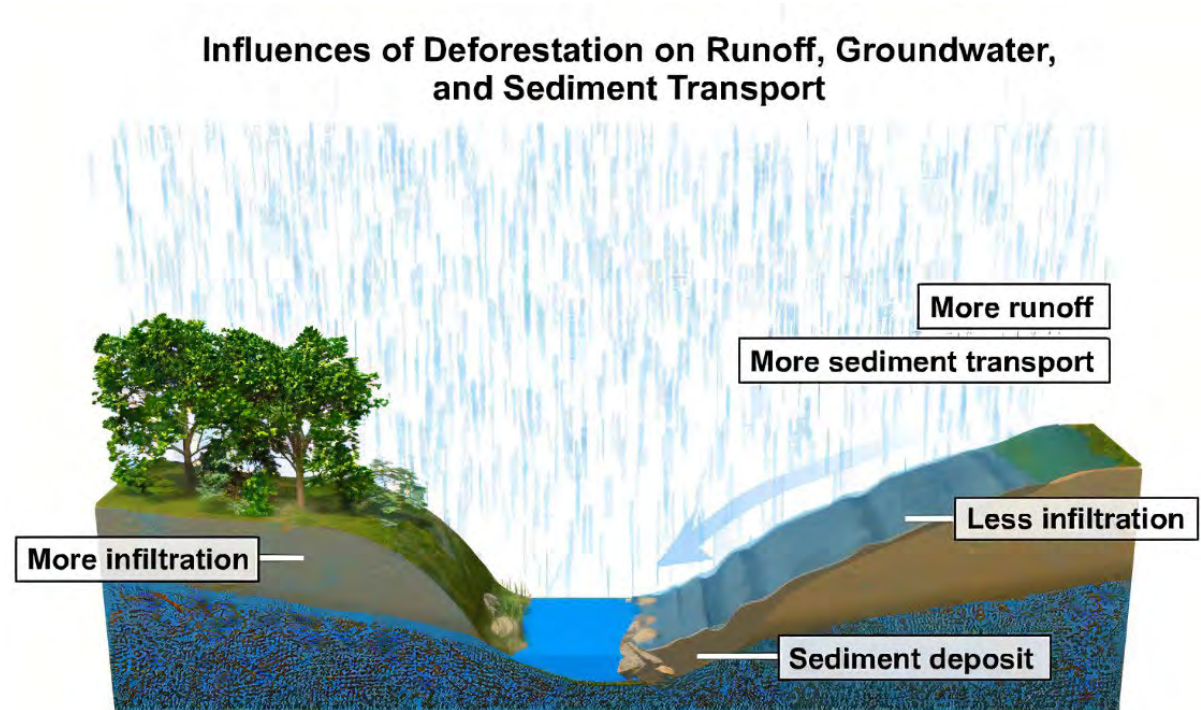
- Retention Ponds hold water permanently, reducing flow entering the watershed

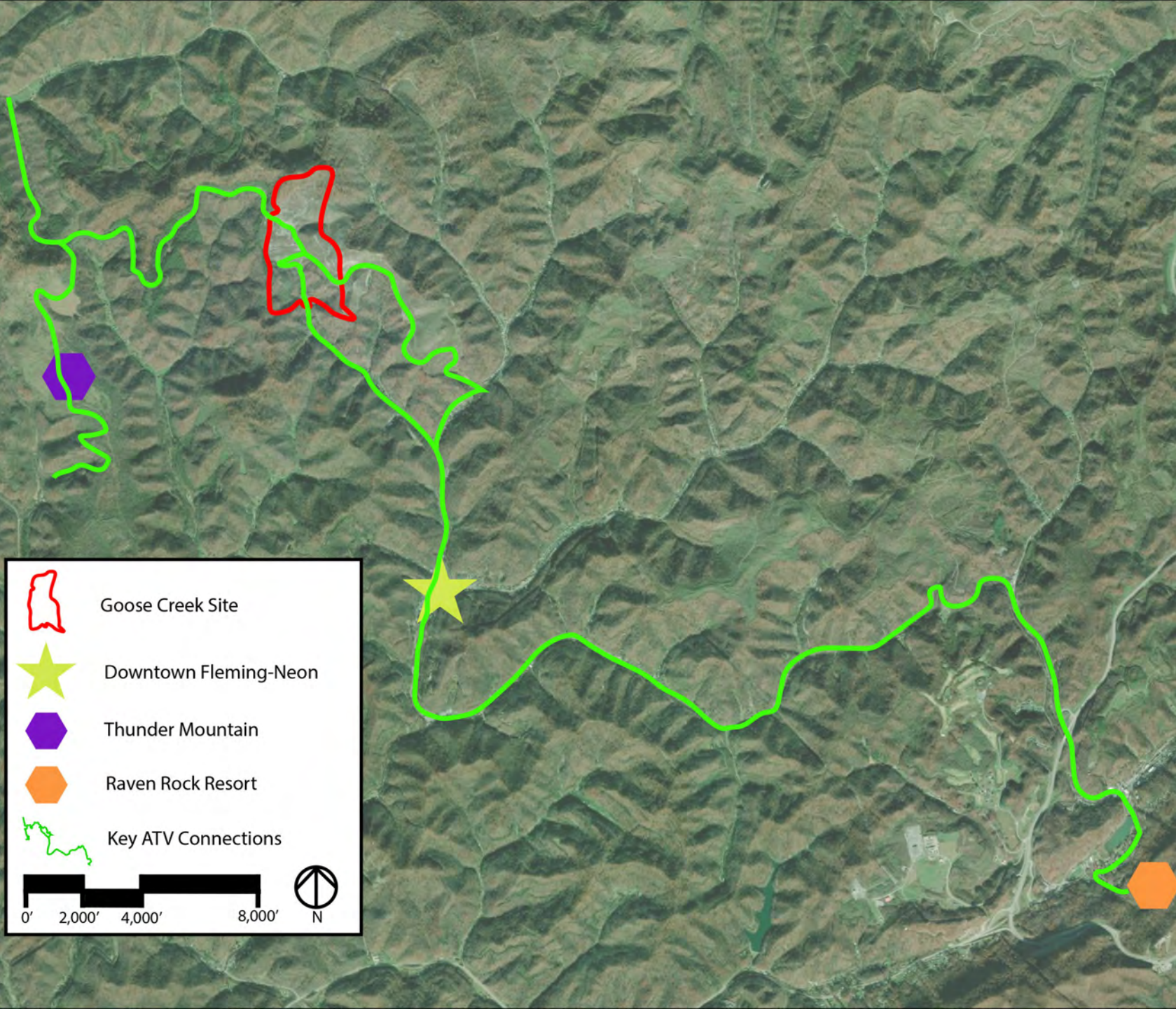


- Detention Ponds hold water temporarily and allow for infiltration, helping to recharge groundwater

Reforestation

- Reforestation leads to more infiltration, evapotranspiration, water capture, and less sediment runoff





Wider ATV Trail Network

- Potential to make Goose Creek a centerpiece to a trail network that connects recreational activities in the county
- Expands the tourism potential



Places to Connect

- Downtown Fleming-Neon
- Raven Rock Resort
- Thunder Mountain Sport Shooting Resort Park



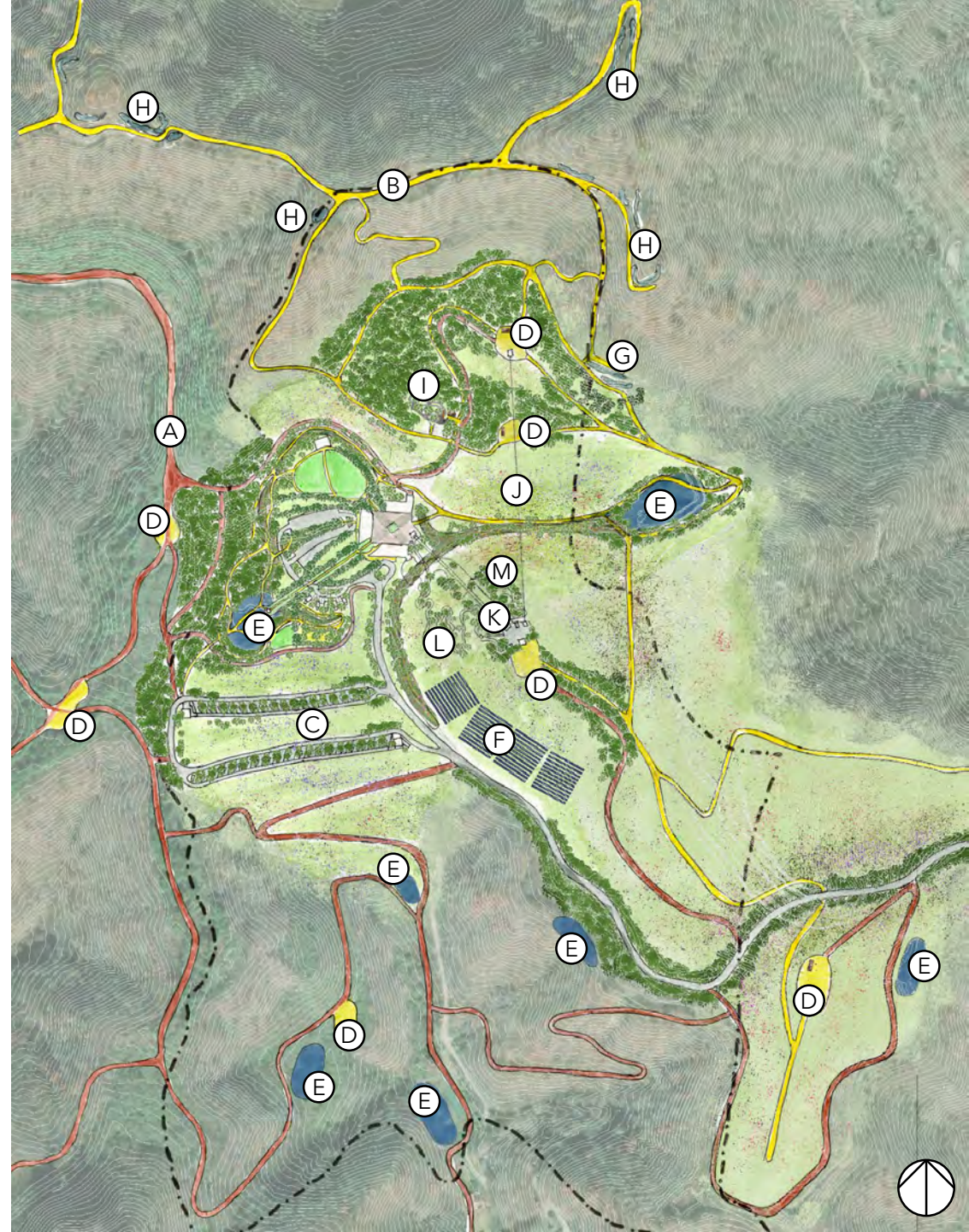
Community Feedback





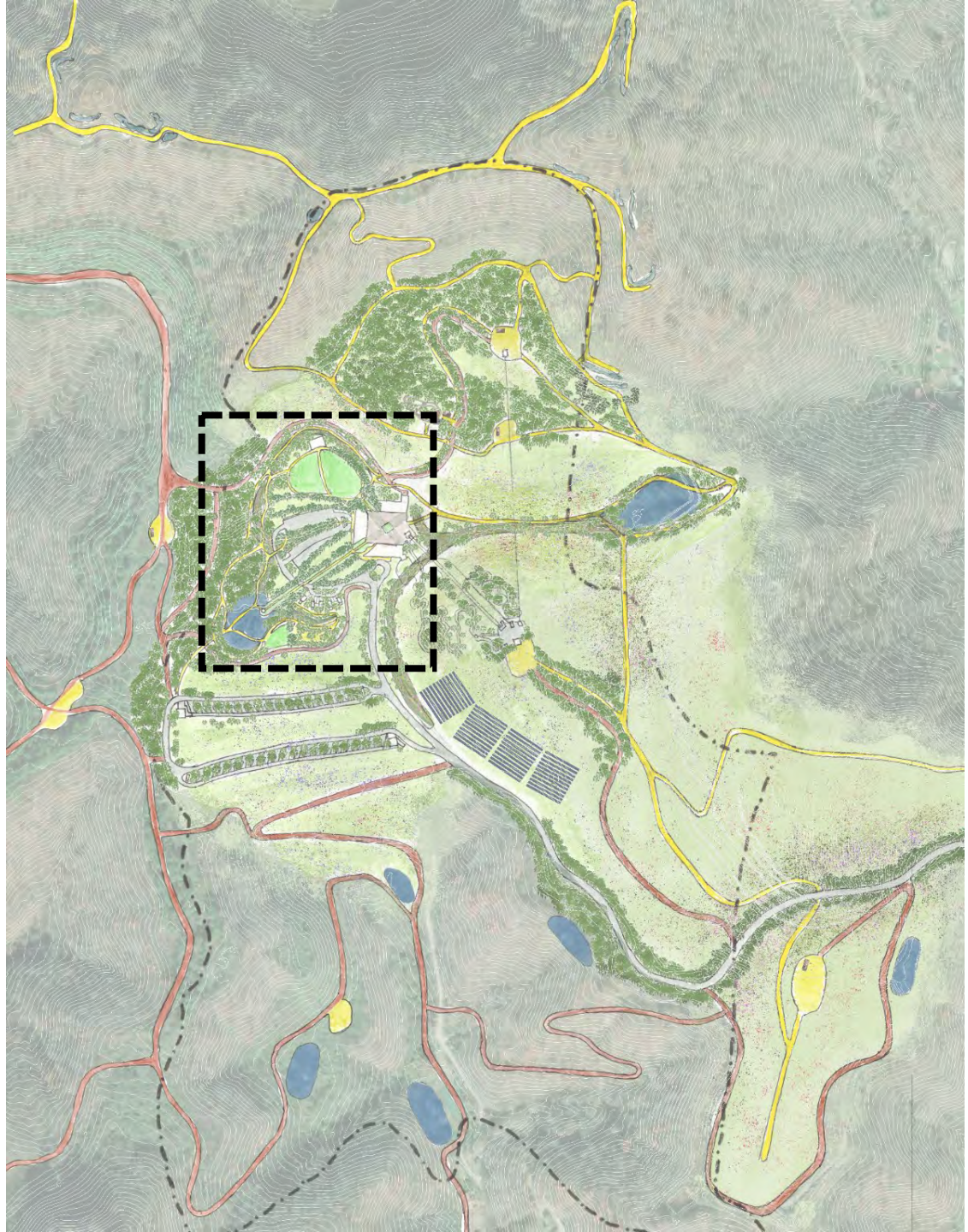
Site Plan

- | | |
|-----------------------------|---------------------------|
| (A) Motorized Trails | (H) Hilltop Rock Climbing |
| (B) Non-Motorized Trails | (I) Bike Pump Track |
| (C) RV Camping | (J) Zipline |
| (D) Primitive Camping | (K) Chair Lift |
| (E) Retention Pond | (L) Alpine Slide |
| (F) Solar Hill | (M) Alpine Coaster |
| (G) High Wall Rock Climbing | |

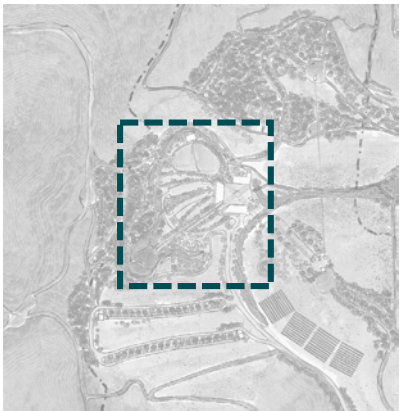


Mine High Wall Climbing





Valley Fill Enlargement



Key Map

- | | | |
|--------------------------|----------------------------|-------------------------|
| (A) Lodge | (H) Amphitheater | (O) Car Hook Up Camping |
| (B) Rental Venue | (I) Children’s Nature Play | |
| (C) Restaurant | (J) Alpine Slide | |
| (D) Visitor Center/Store | (K) Alpine Coaster | |
| (E) Museum | (L) Chair Lift | |
| (F) Cabins | (M) Retention Pond | |
| (G) Detention Swale | (N) Viewing Lawn | |





Sitting Area at Dusk



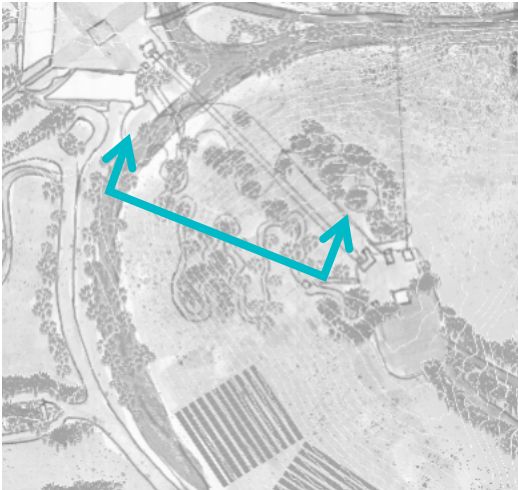
Environment Inside Plaza



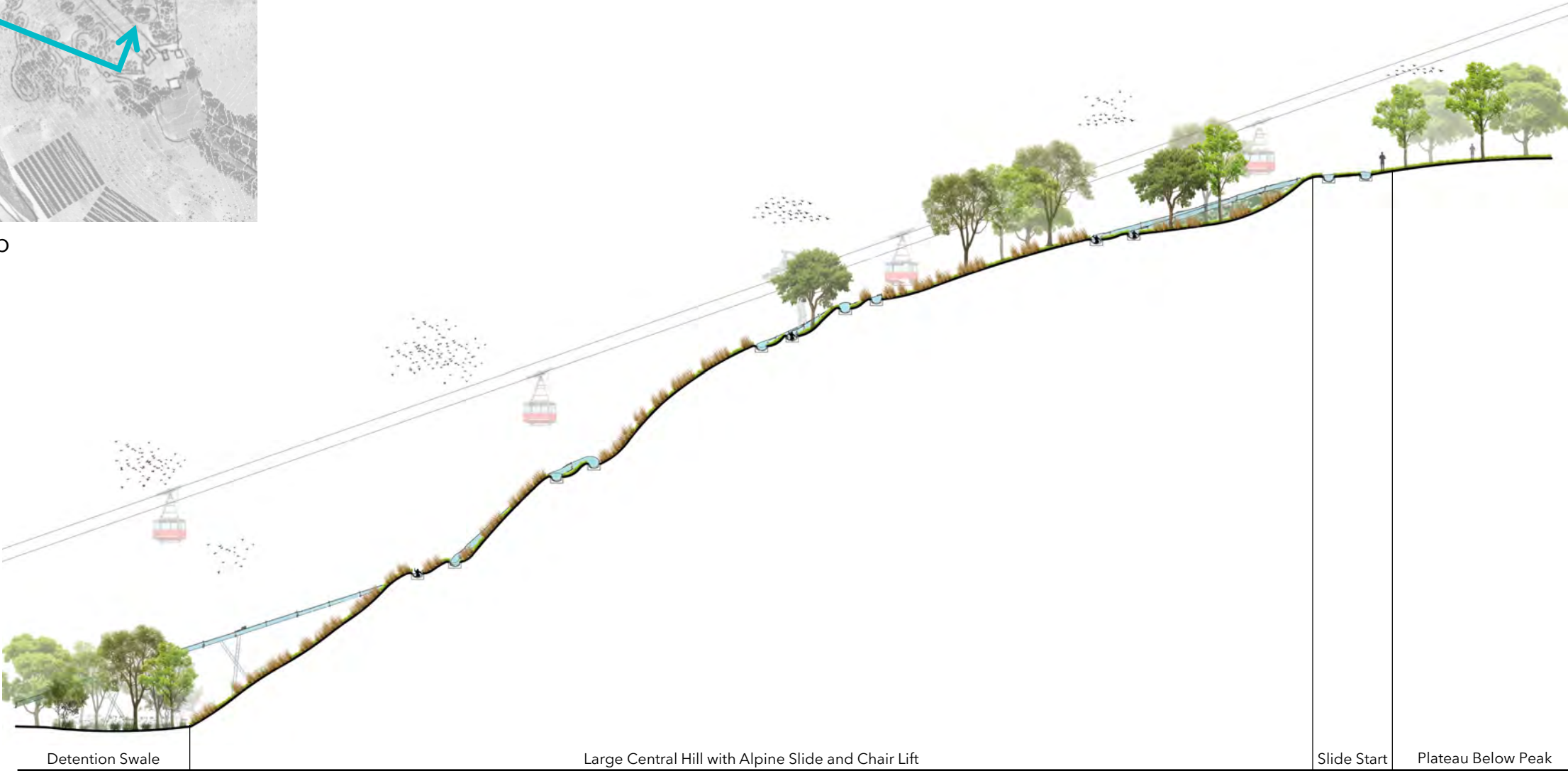
Plaza at Dusk



Looking into Plaza and the Mine Monument Centerpiece



Key Map



Section Through Central Hill and Alpine Slide and Chair Lift



Pathway Axis Between Plaza and Retention Pond



Looking Down Pathway Towards Gazebo and Pond



Small Gazebo Jutting into Retention Pond



Pathway at Dusk

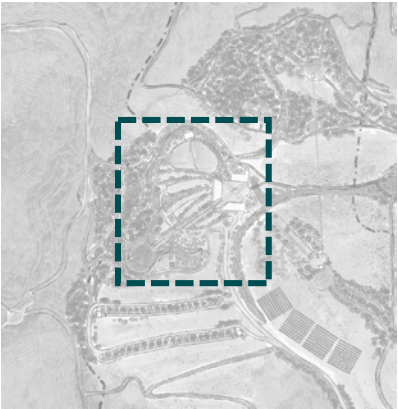


Key Map

Amphitheater

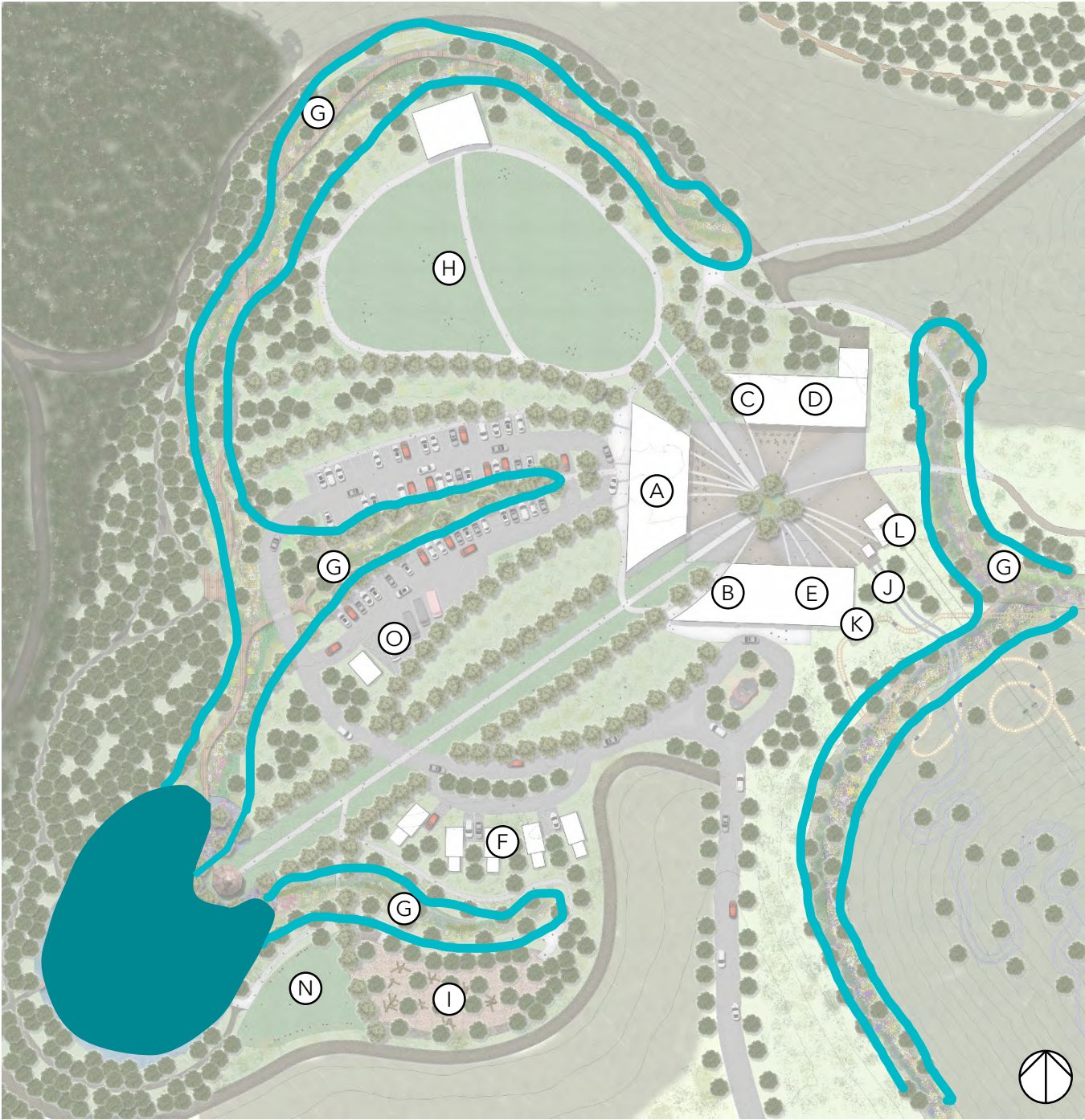


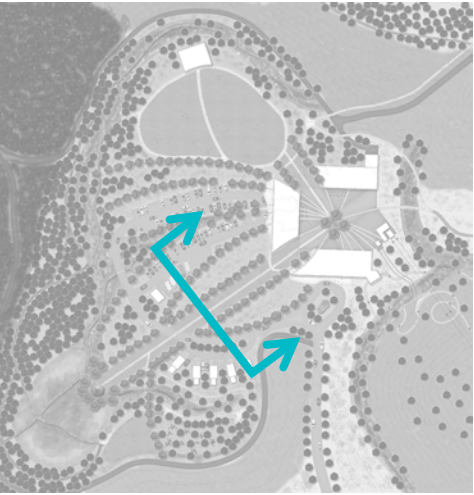
Valley Fill Enlargement: Water



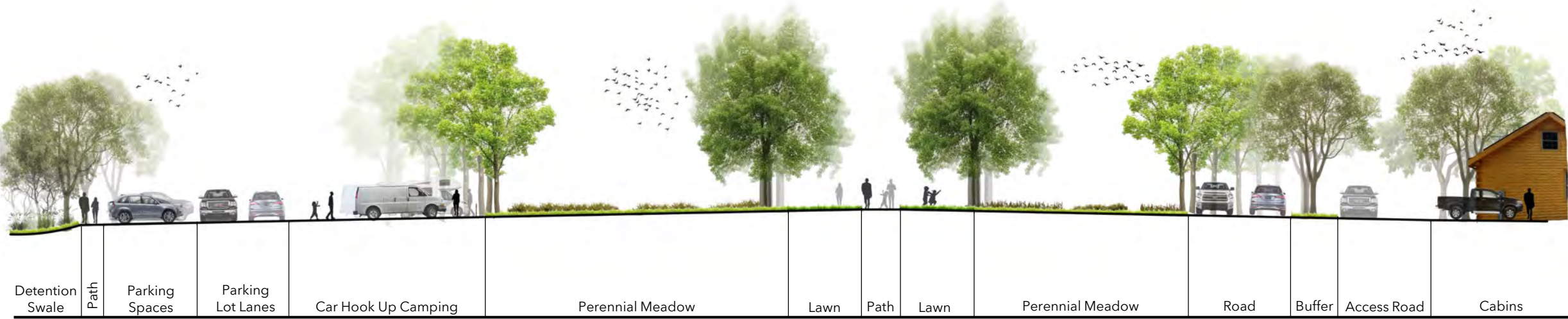
Key Map

- | | | |
|--------------------------|----------------------------|-------------------------|
| (A) Lodge | (H) Amphitheater | (O) Car Hook Up Camping |
| (B) Rental Venue | (I) Children’s Nature Play | |
| (C) Restaurant | (J) Alpine Slide | |
| (D) Visitor Center/Store | (K) Alpine Coaster | |
| (E) Museum | (L) Chair Lift | |
| (F) Cabins | (M) Retention Pond | |
| (G) Detention Swale | (N) Viewing Lawn | |

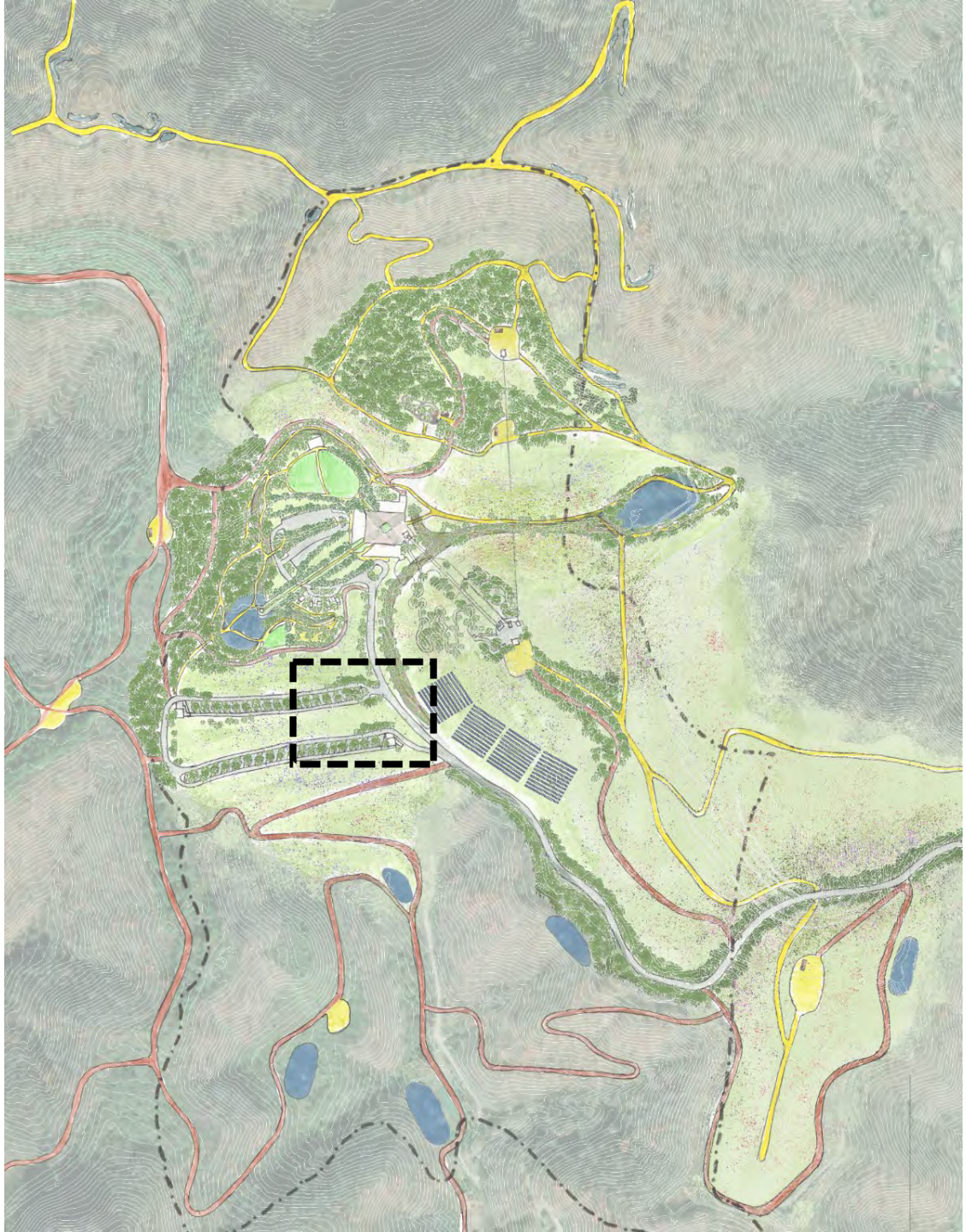




Key Map



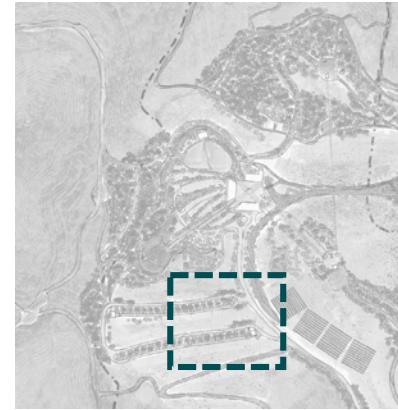
Section Through Formal Center of Valley Fill





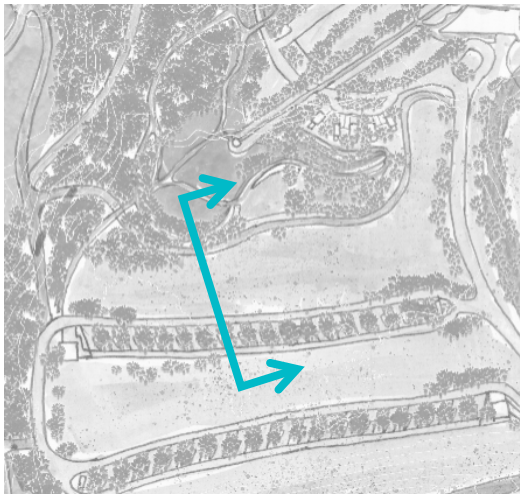


RV Camping Enlargement



Key Map

- (A) RV Camping/Living Space
- (B) Detention Swale
- (C) Bathroom
- (D) Check-in Desk
- (E) Waste Dump
- (F) Sidewalk



Key Map



Section Through RV Camping & Regraded Hill



Goose Creek

ASTAY

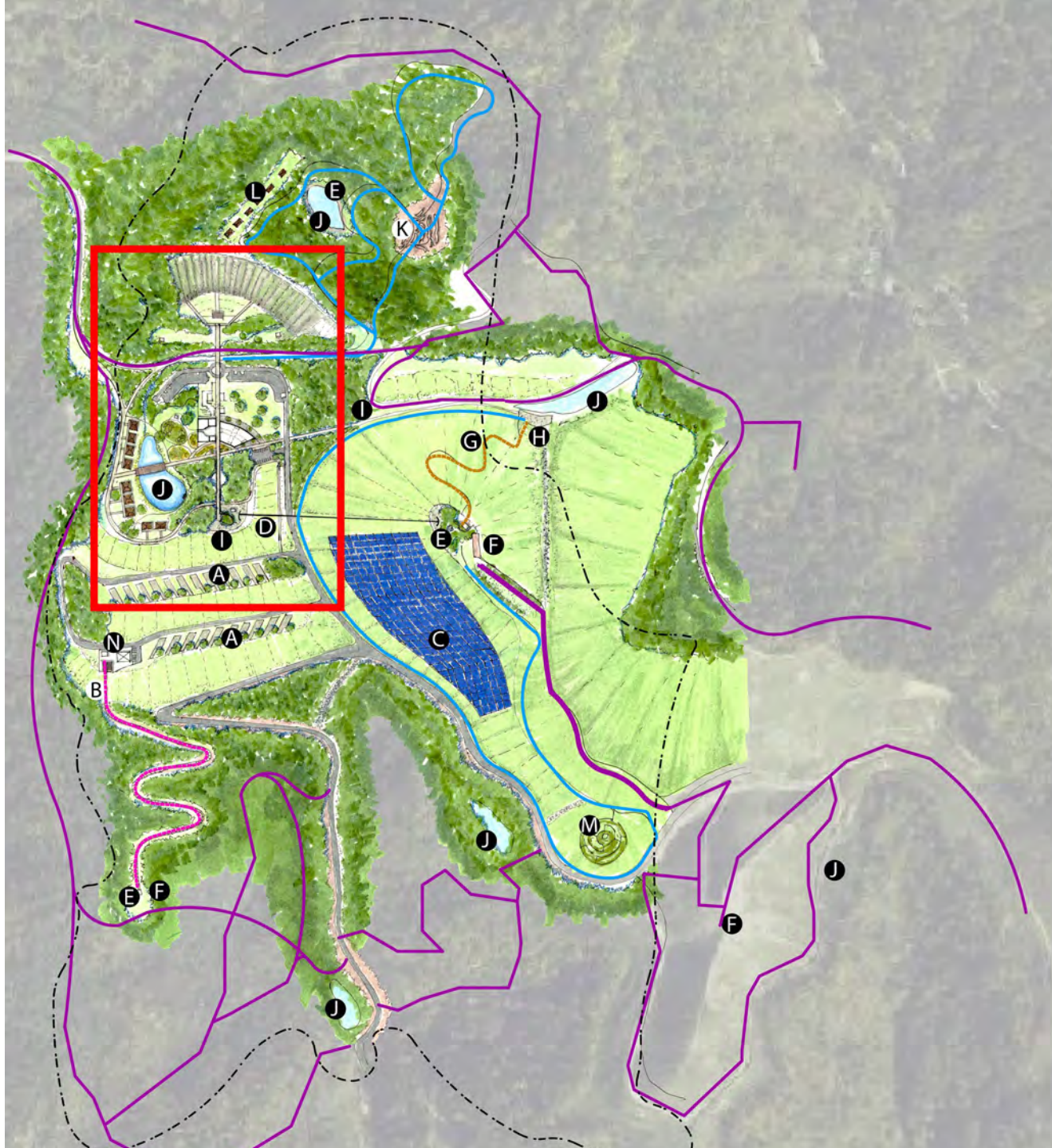
Emmanuella Braide

MASTER PLAN

- Motorized ATV trail
- Non-motorized trail
- Alpine Slides
- Alpine coaster

- | | |
|-------------------------------|-----------------------------------|
| A RV Campground | G Alpine slides |
| B Alpine coaster | H Alpine slides landing |
| C Solar Panels | I Overlook/gathering space |
| D Chair lift | J Water retention |
| E Primitive Campground | K Bike pump track |
| F ATV Rest stop | M Meditation space |





Central Hub Enlargement

- | | | |
|-----------------------------|-----------------------------|--------------------------|
| A Visitor center | I Toilet facility | Q Gathering area |
| B Restaurants/Stores | J Bioretention pond | R Mixed use field |
| C Patio | K Education deck | S Multi-use Trail |
| D Courtyard | L Terraced sitting | T Bio-swale |
| E Pergola | M Overlook/gathering | U Open Field |
| F Playground | N Chair lift | V Stage |
| G Flower garden | O Bike rental | W Amphitheater |
| H Cabin Lodge | P Parking | |





Section through Open Field/Parking Lot/ Mixed use Trail and swale



Section through RV campground and water retention area



View of Major axis



View towards playground and Visitor center



View of education deck