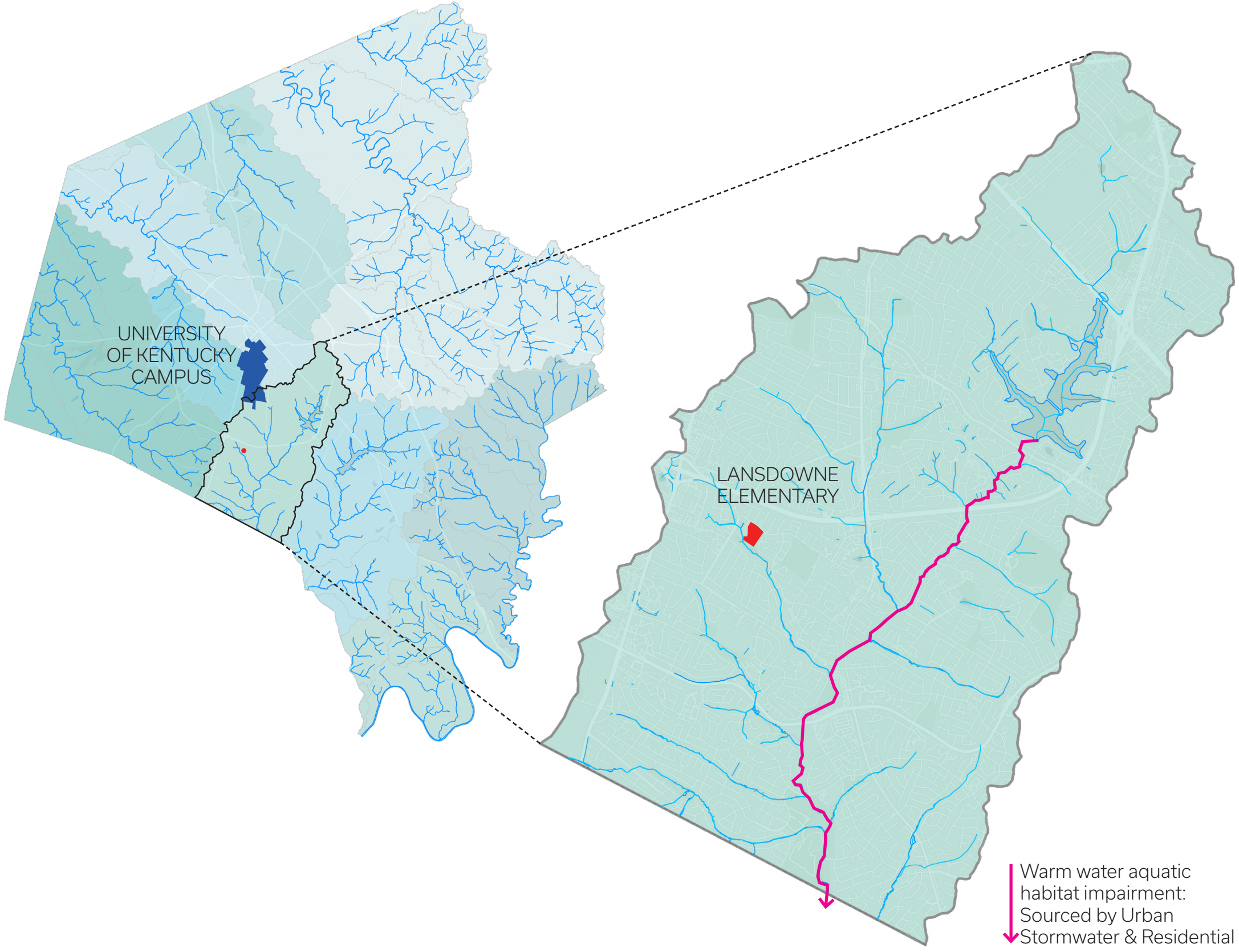


# THE LIVING SCHOOLYARD: STORMWATER FOR CHANGE

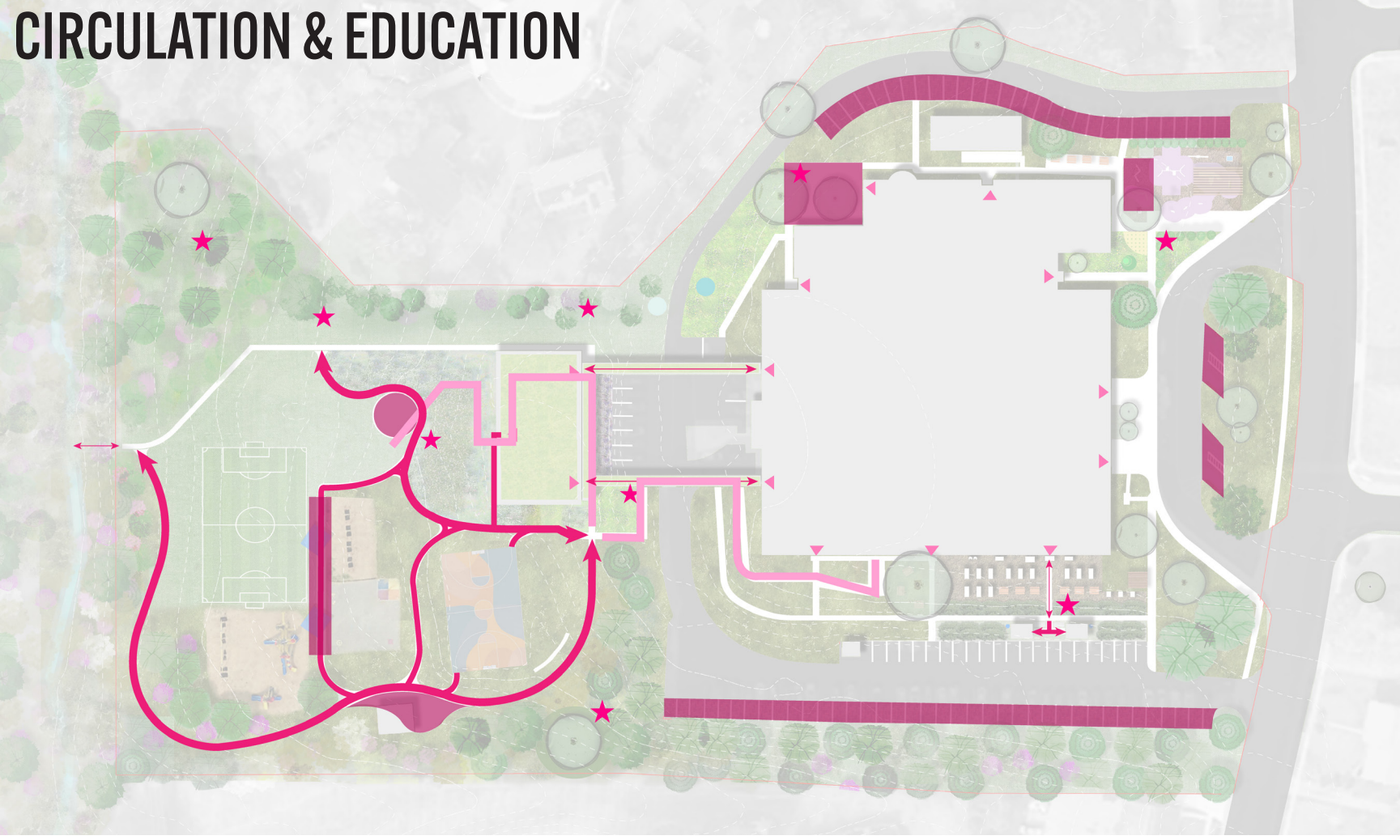
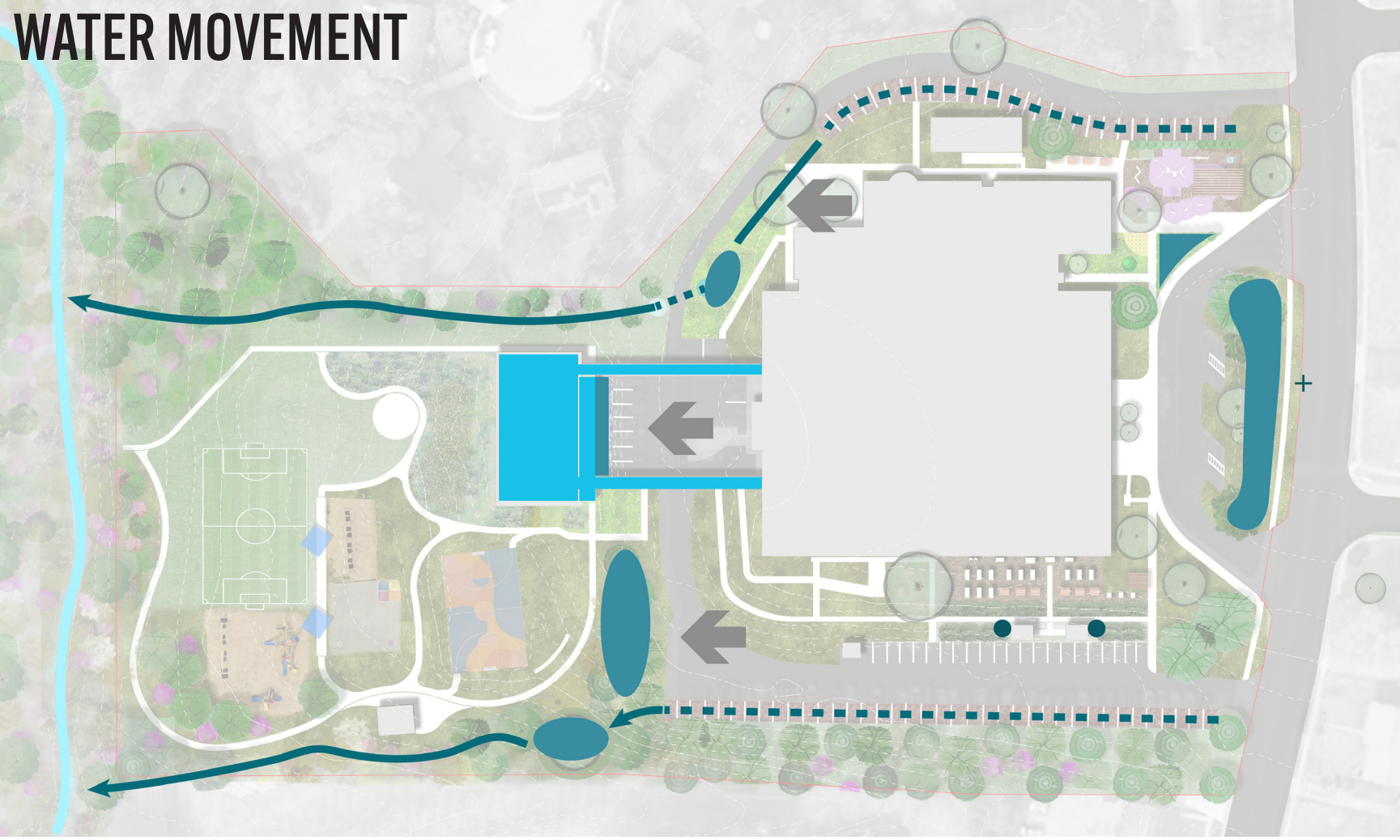
## WEST HICKMAN CREEK WATERSHED



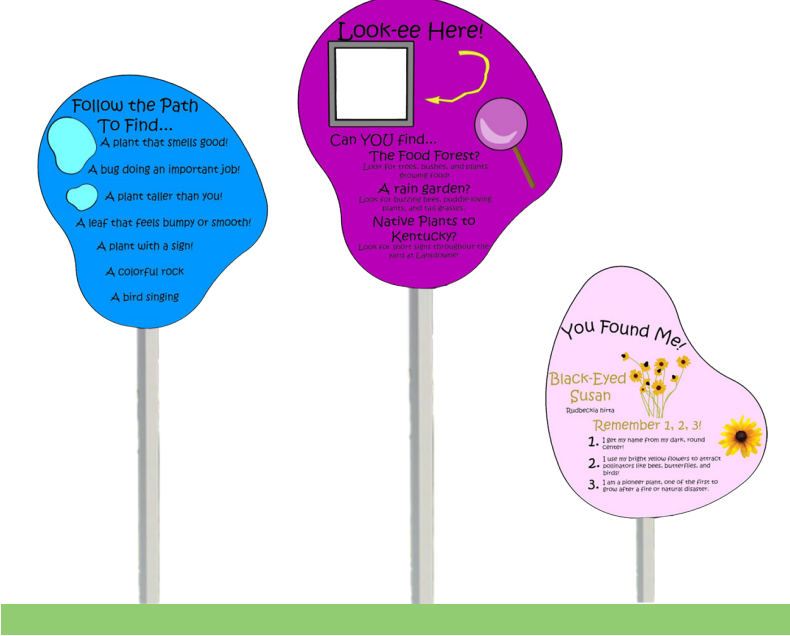
## EXISTING CONDITIONS OF SCHOOL



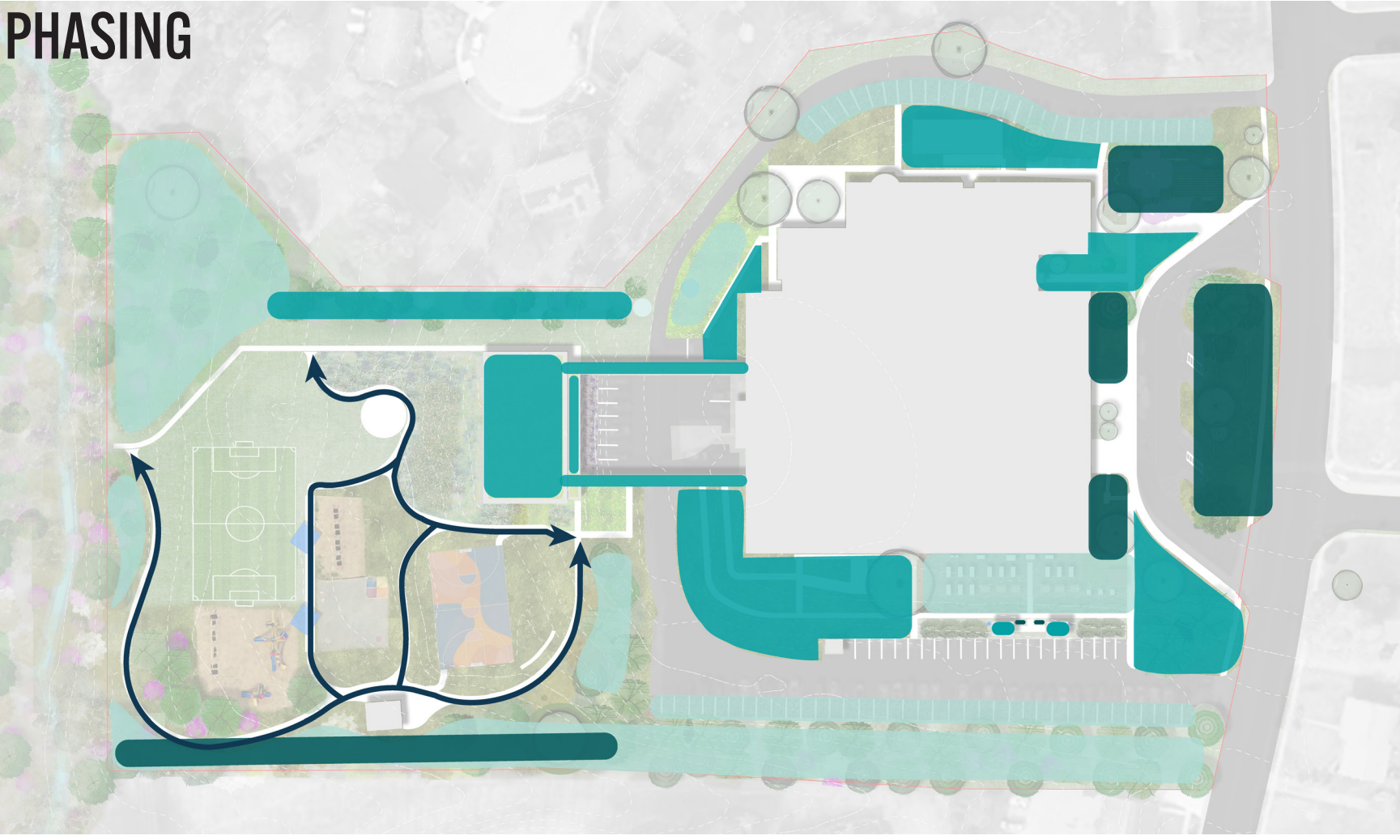
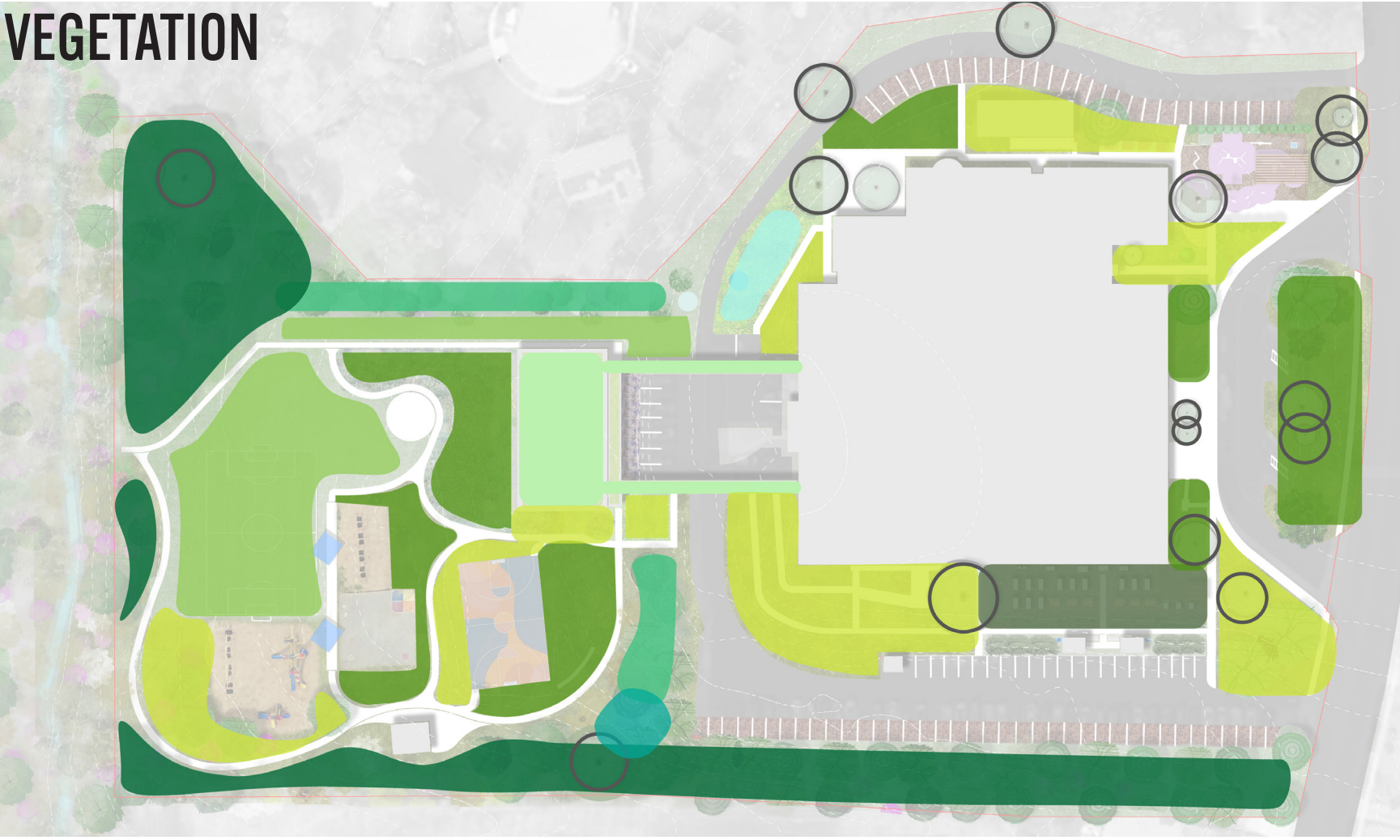
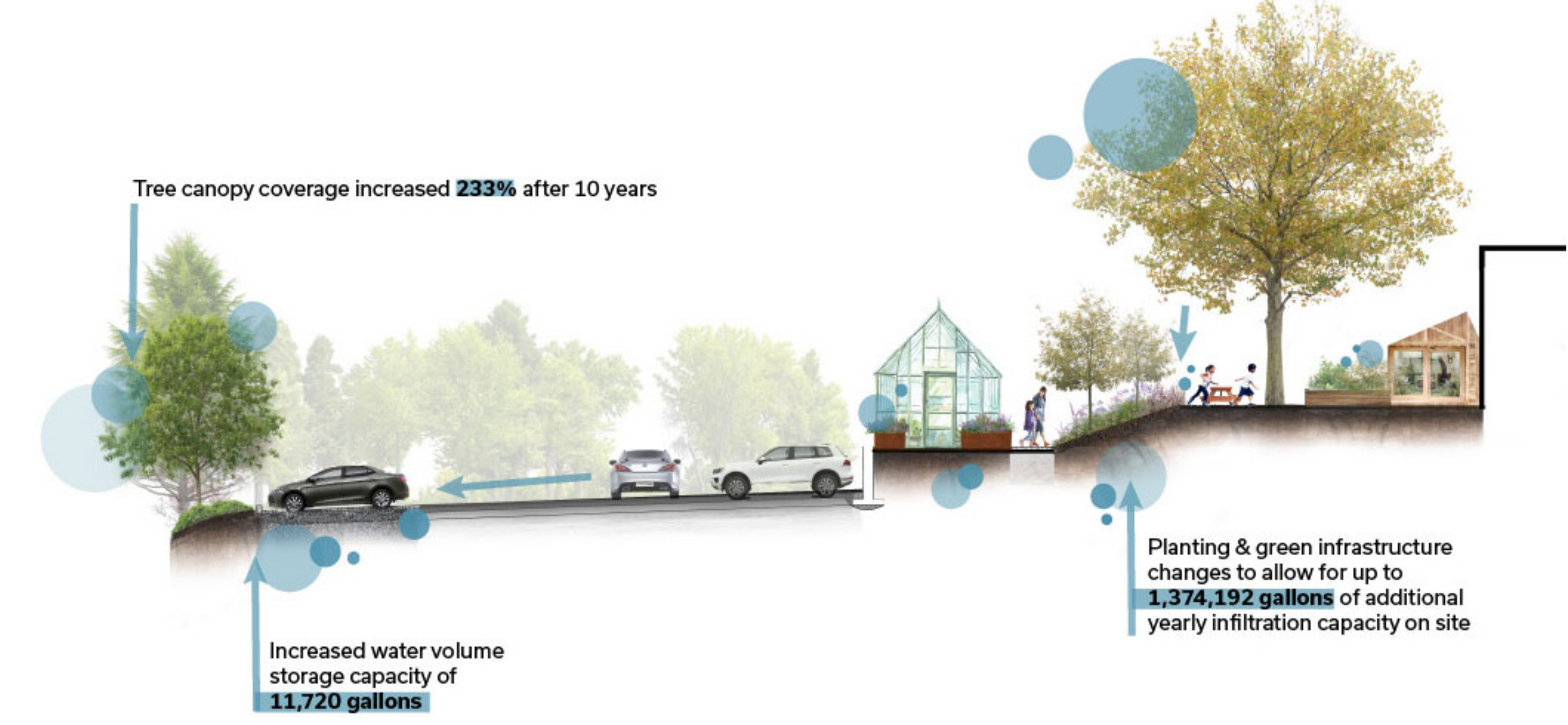
## SITE PHOTOS



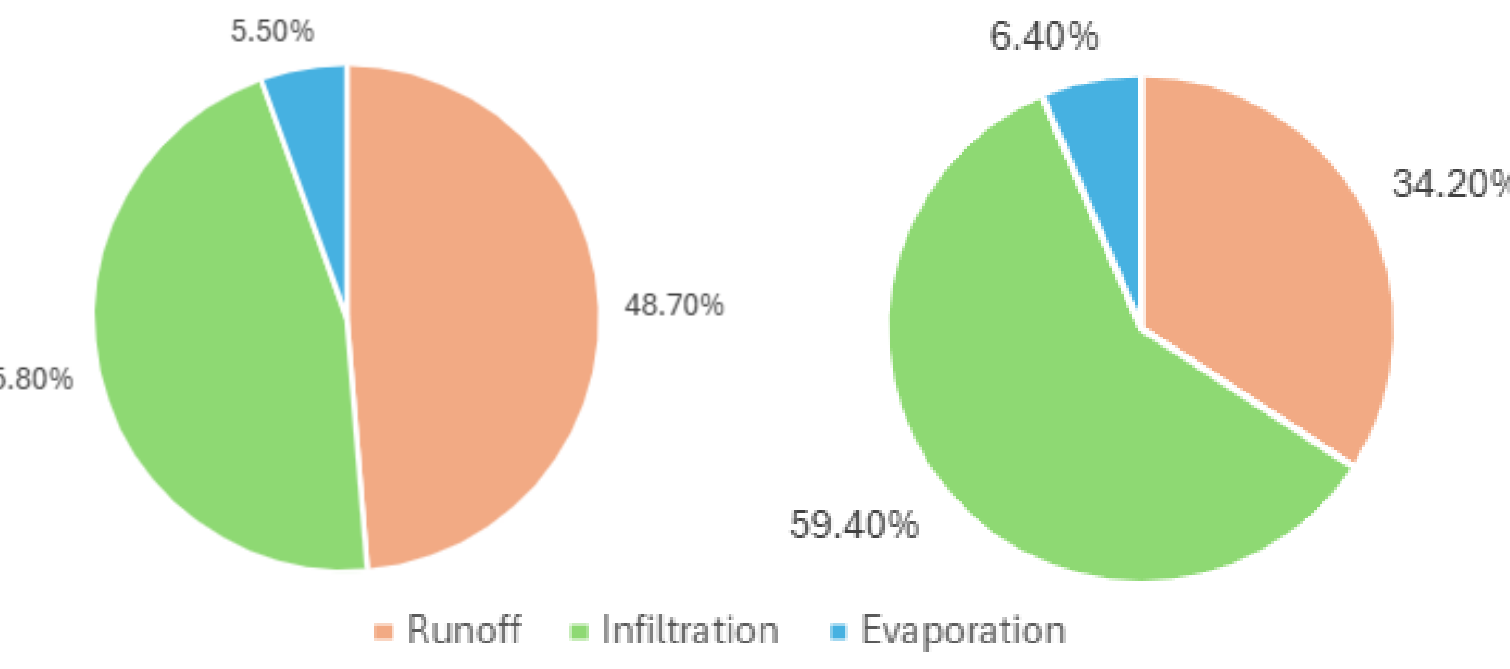
## EDUCATIONAL SIGNAGE ★



## E: WATER MOVEMENT SECTION



## EXISTING STORMWATER INFILTRATION



## F: GREEN ROOF SECTION

