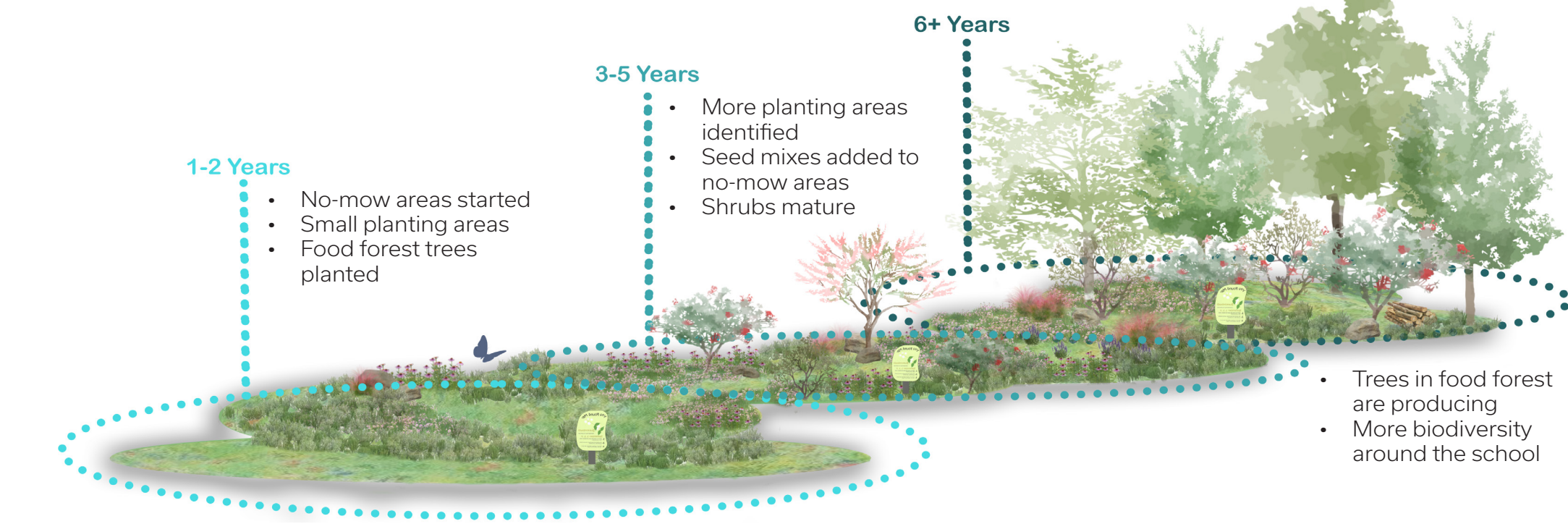


THE LIVING SCHOOLYARD: FROM PUDDLES TO POSSIBILITIES

GOALS

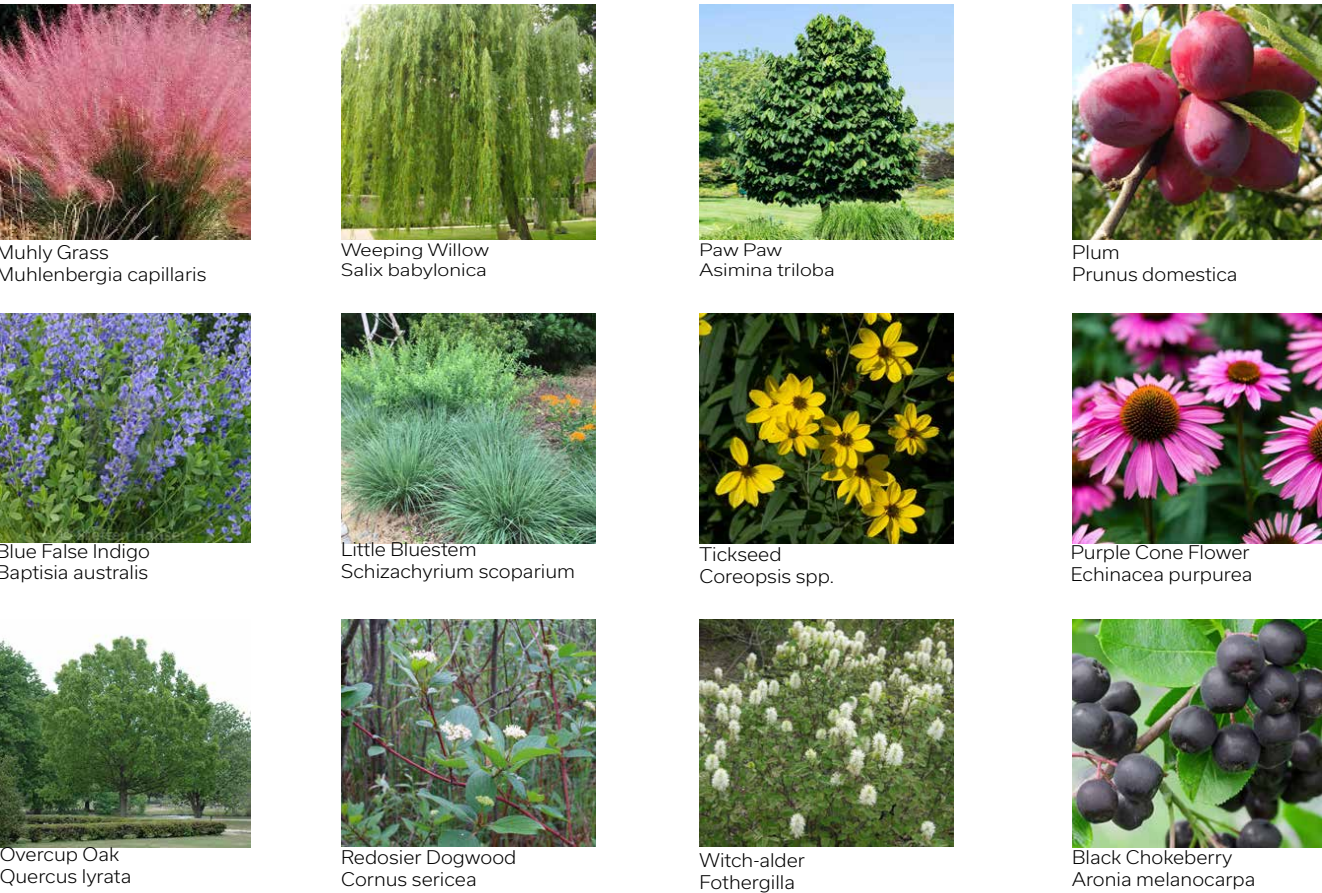
- CONNECT & EXPAND:** The Living Schoolyard connects students at Lansdowne Elementary to nature through hands-on education, outdoor experiences, and improved access to green spaces & expand students' understanding of ecological systems, including the water cycle and native plant communities, as well as the diversity of accessible outdoor experiences.
- ENRICH & ENGAGE:** Through the careful integration of outdoor classroom spaces and educational signage, the Living Schoolyard will enrich students' learning experiences and the quality of outdoor play, and engage their senses, bodies and minds in exploration, discovery and wonder.
- RESPOND & REFLECT:** As a result of an intentional engagement process, the design for the Living Schoolyard will respond to the school community's needs and reflect its creative ideas and unique identity. More than 80% of Lansdowne students are economically disadvantaged, and food insecurity is a pressing concern. Expanding the existing gardens and edible landscapes will provide students with meaningful experiences in planting, growing, harvesting, and understanding where their food comes from.



PLANT PALETTE

Plants To See...

- Vegetable Garden
- Mixed-layer native plantings
- Reforestation

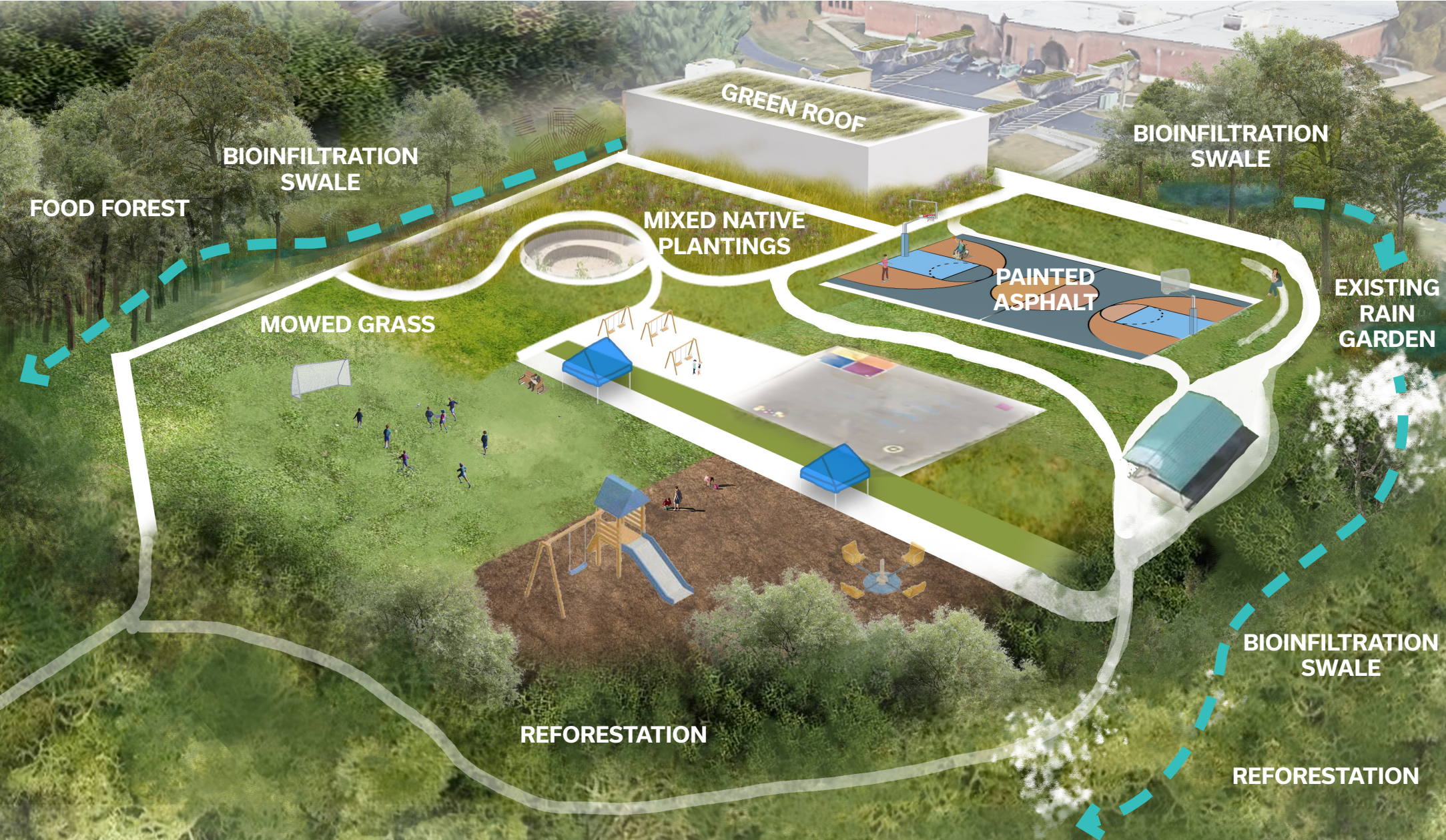


Plants To Thrive...

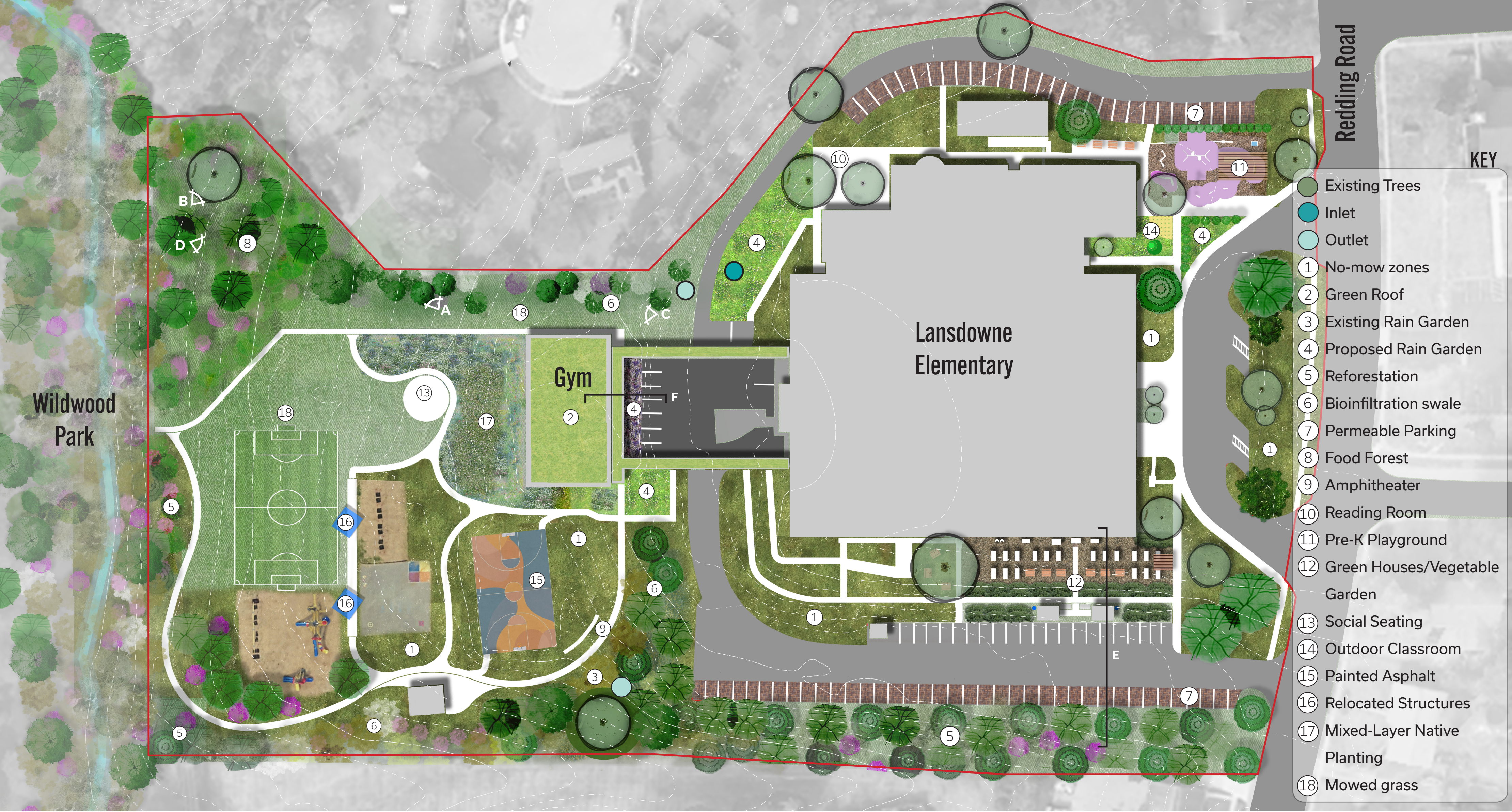
- No-mow zone
- Green Roof
- Reforestation
- Existing Rain Garden
- Proposed Rain Garden
- Bio-infiltration Swale



AXONOMETRIC OF LOWER PLAYGROUND



SITE MASTER PLAN

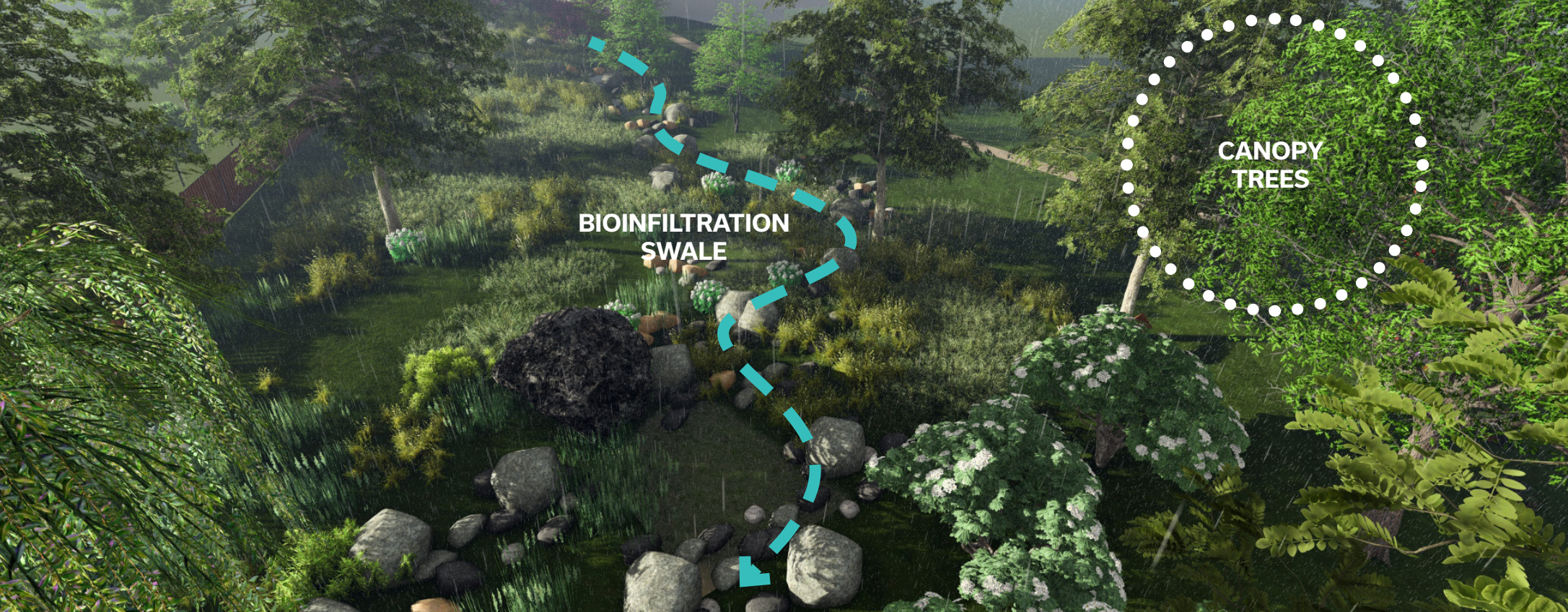


SCALE 1" = 30' N

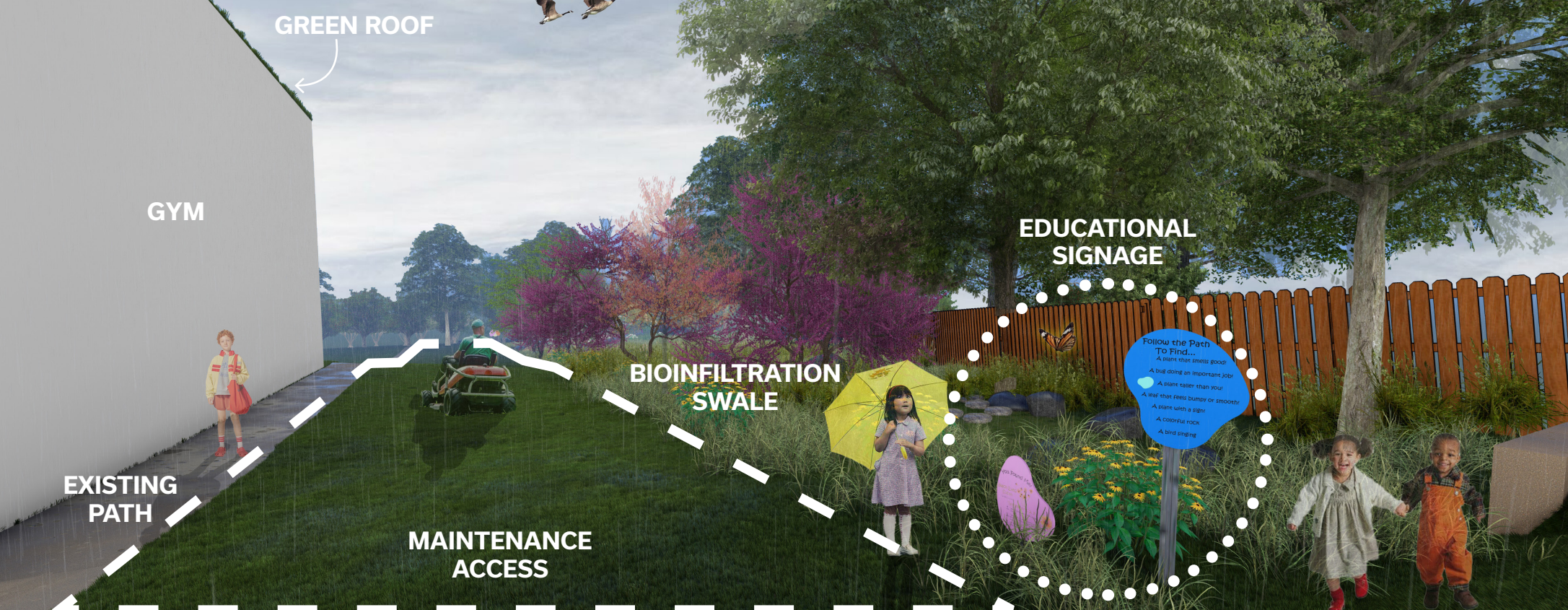
A: BIOINFILTRATION SWALE



B: BIOINFILTRATION SWALE



C: SWALE ACCESS



D: OUTDOOR CLASSROOM

